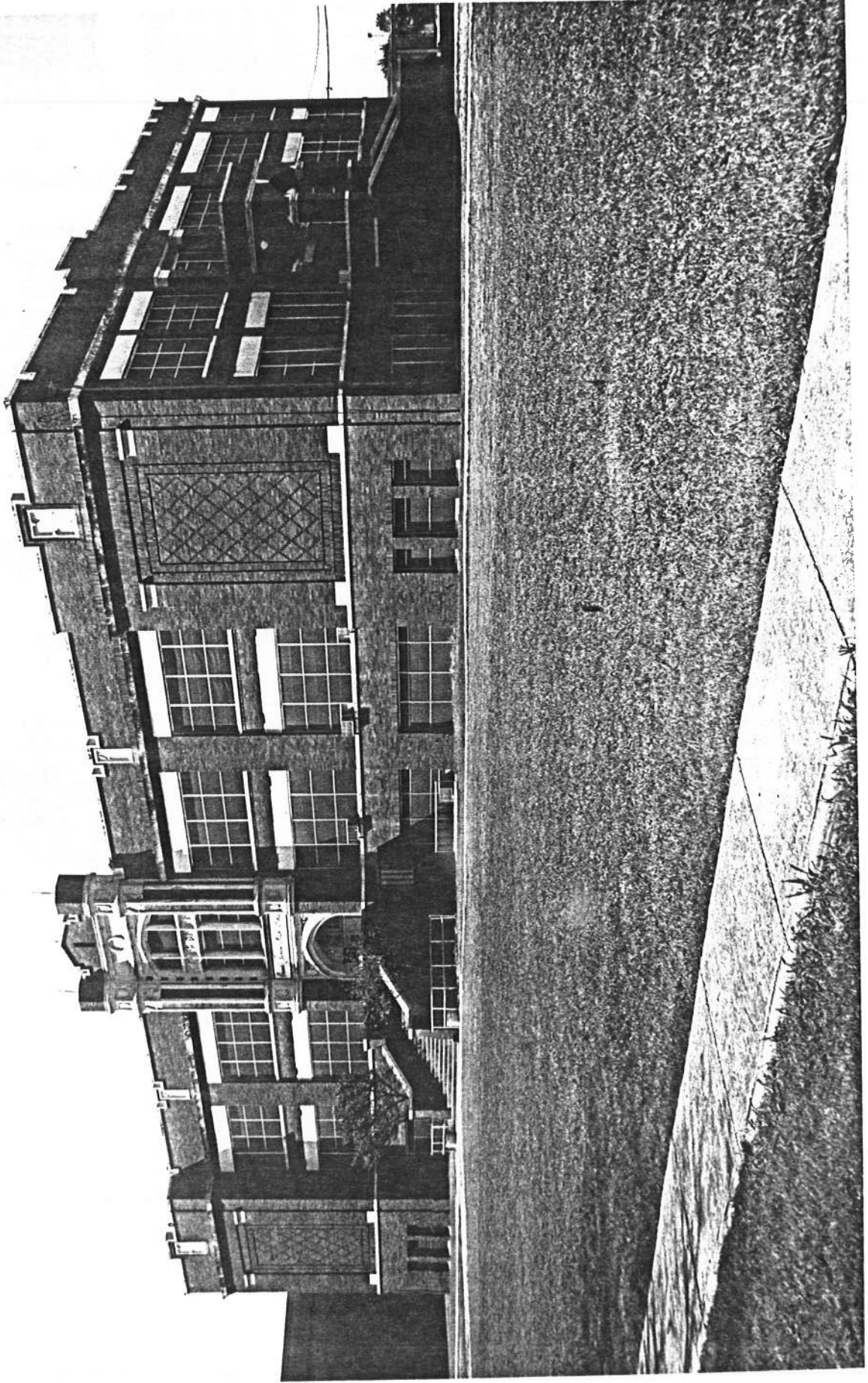


"Historic Resources of Ennis, Texas" Multiple-
Resource Nomination; city limits of Ennis,
Ellis County, Texas.

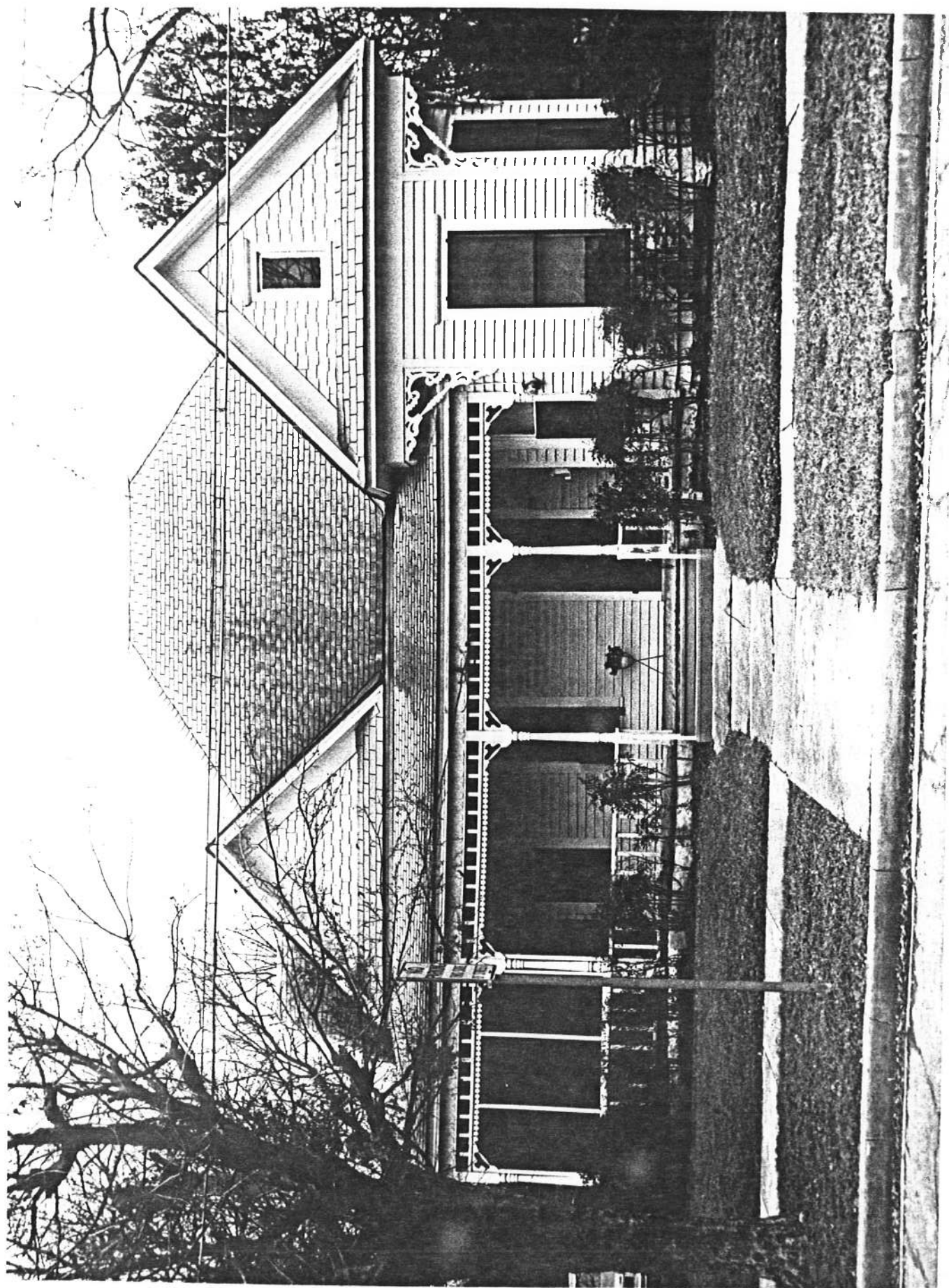
Photo: Daniel Hardy, 1984; negative with
Texas Historical Commission, Austin.
Site No. 781, Sharp House, 208 N. Gaines,
camera looking east.

Photo 21 of 56



"Historic Resources of Ennis, Texas" Multiple-
Resource Nomination; city limits of Ennis,
Ellis County, Texas.

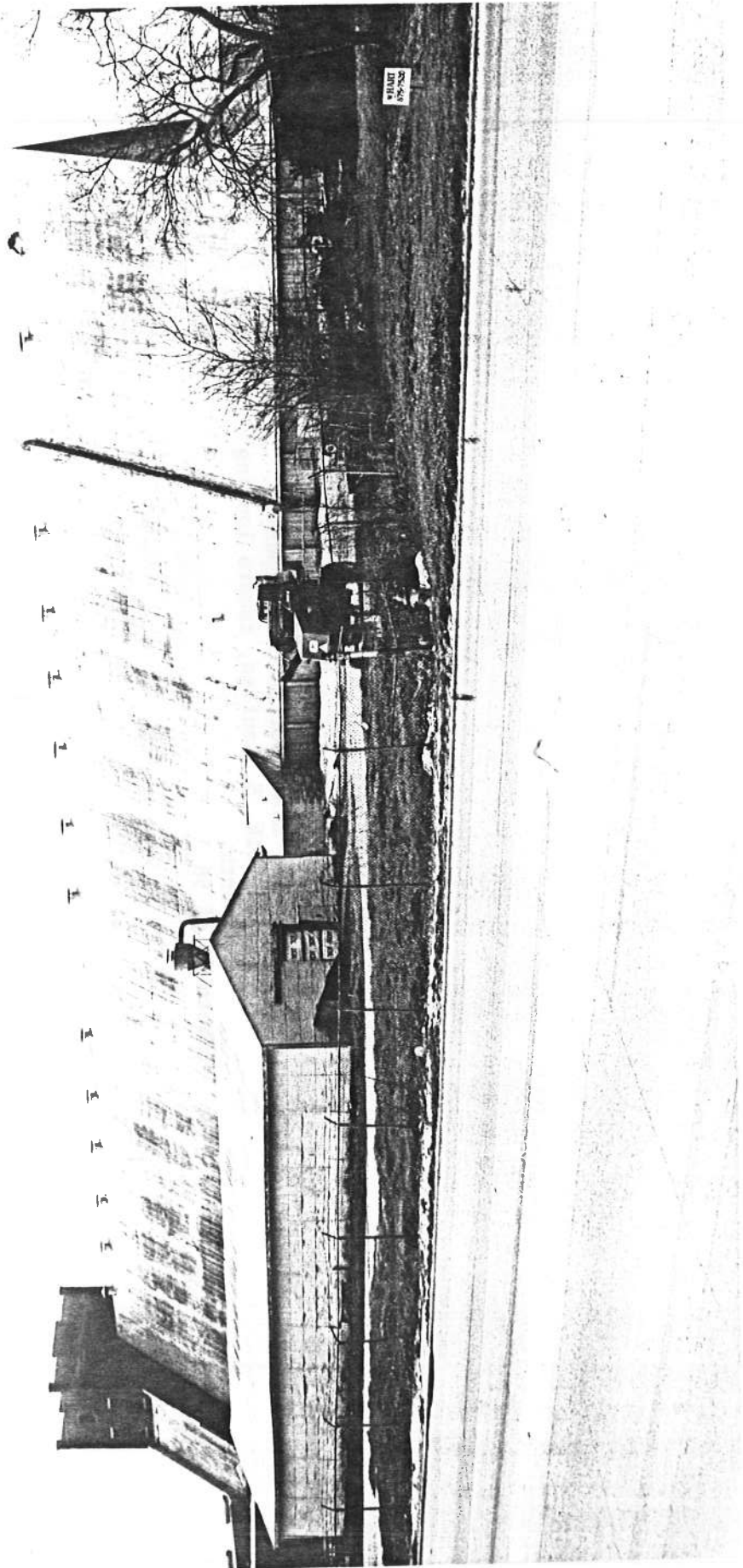
Photo: Amber Taylor, 1984; negative with
Texas Historical Commission, Austin.
Site No. 759, 501 N. Gaines, camera looking west.
Photo 22 of 56



"Historic Resources of Ennis, Texas" Multiple-
Resource Nomination; city limits of Ennis,
Ellis County, Texas.

Photo: Daniel Hardy, 1984; negative with
Texas Historical Commission, Austin.
Site No. 754, Meredith House, 701 N. Gaines,
camera looking southwest.

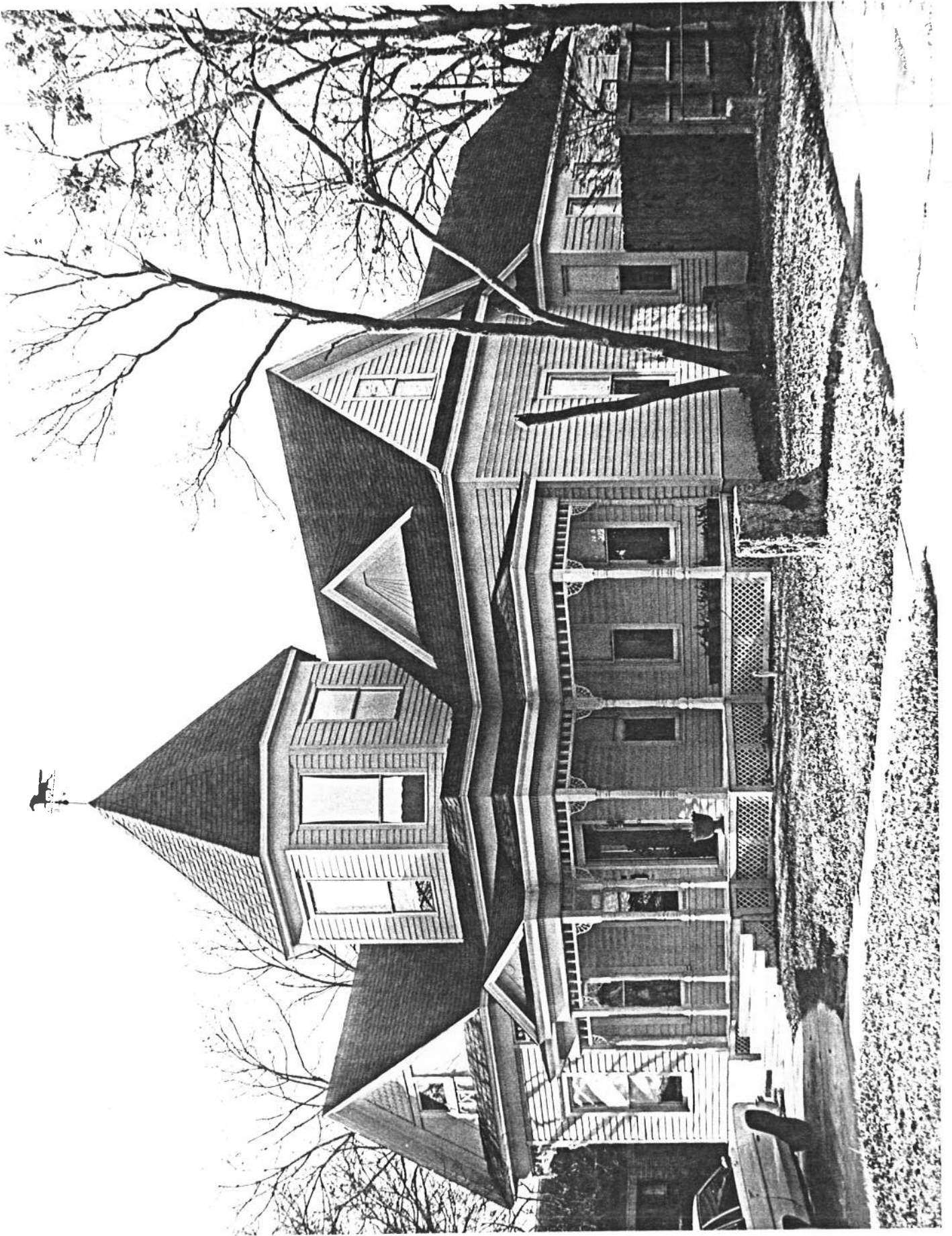
Photo 23 of 56



"Historic Resources of Ennis, Texas" Multiple-
Resource Nomination; city limits of Ennis,
Ellis County, Texas.

Photo: David, Moore, 1984; negative with
Texas Historical Commission, Austin.
Site No. 1166, Ennis Cotton Oil Company,
800 blk. S. Kaufman, camera looking
north.

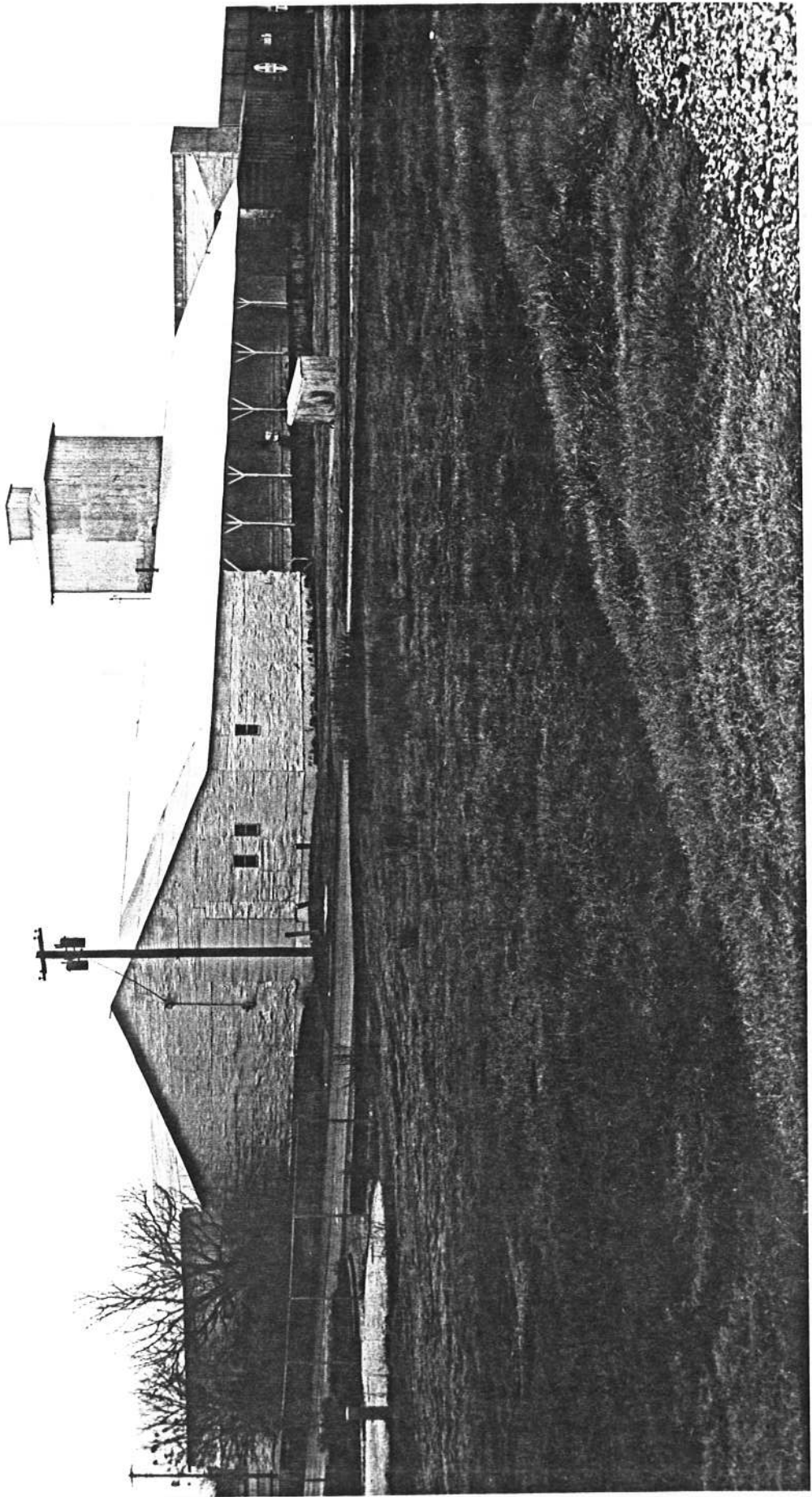
Photo 24 of 56



"Historic Resources of Ennis, Texas" Multiple-
Resource Nomination; city limits of Ennis,
Ellis County, Texas.

Photo: Daniel Hardy, 1984; negative with
Texas Historical Commission, Austin.
Site No. 274, Jolesch House, 504 W. Knox,
camera looking northwest.

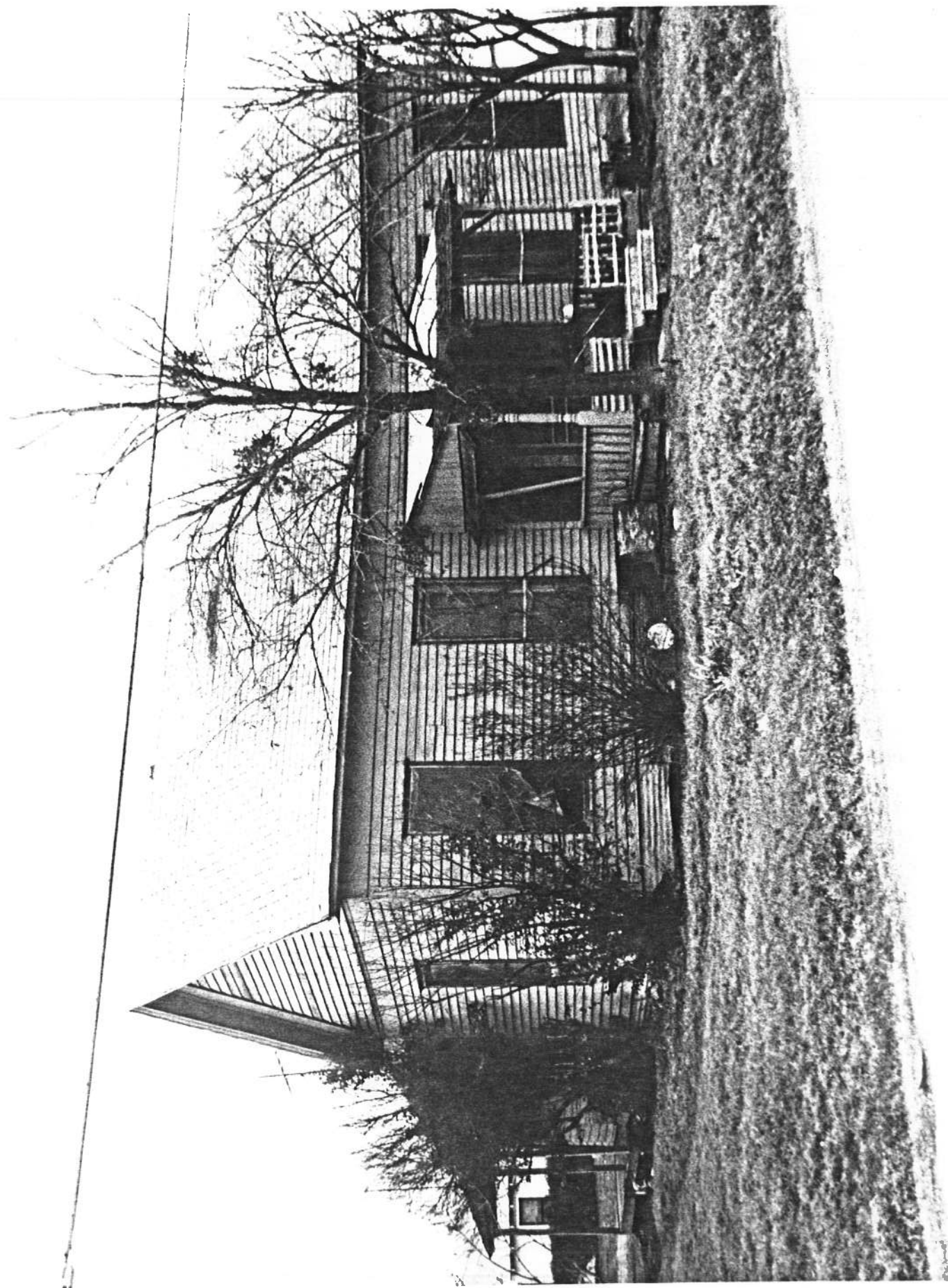
Photo 25 of 56



"Historic Resources of Ennis, Texas" Multiple-
Resource Nomination; city limits of Ennis,
Ellis County, Texas.

Photo: Daniel Hardy, 1984; negative with
Texas Historical Commission, Austin.
Site No. 622, Ennis Cotton Compress, 111 E.
Lampasas, camera looking south.

Photo 26 of 56

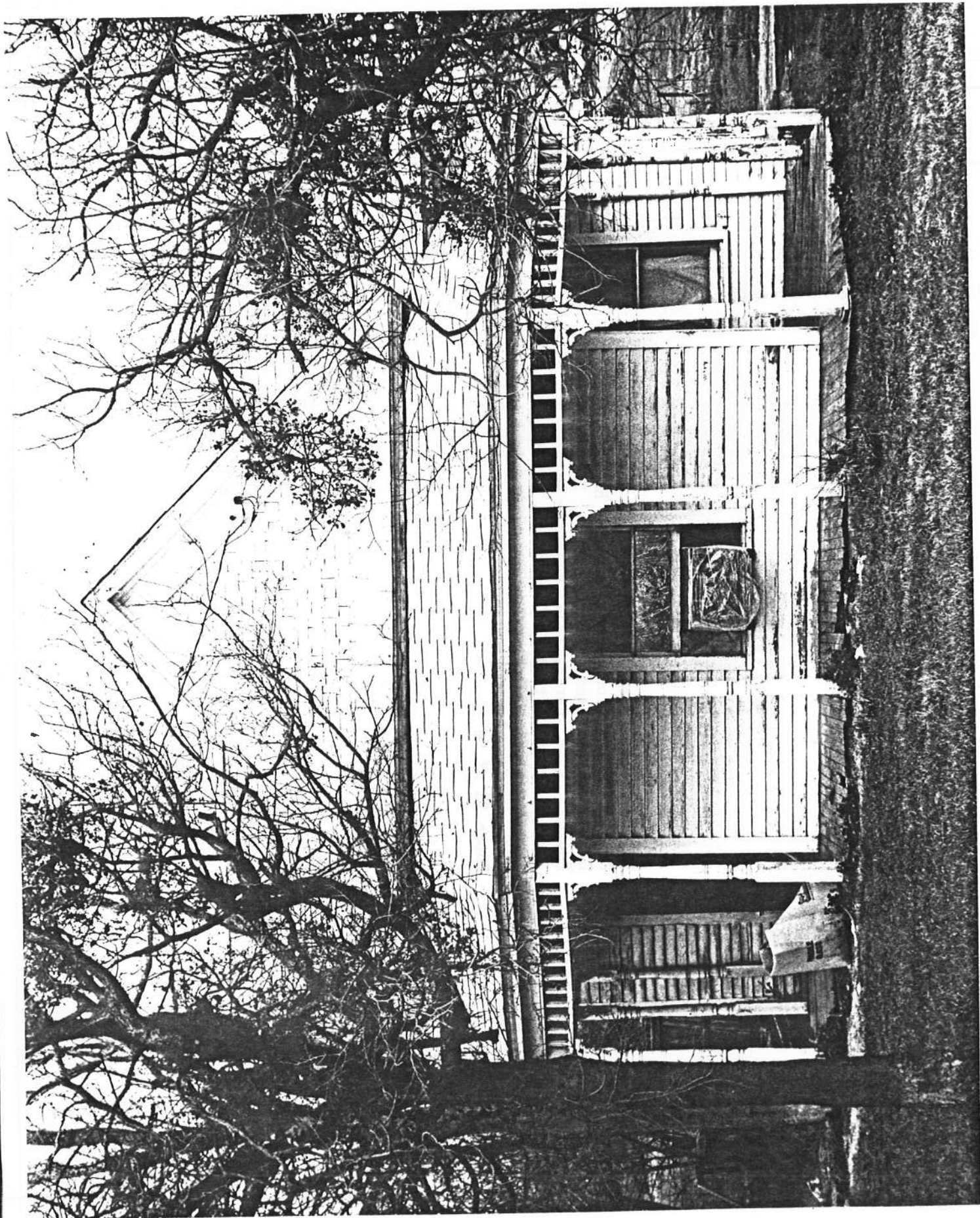


"Historic Resources of Ennis, Texas" Multiple-
Resource Nomination; city limits of Ennis,
Ellis County, Texas.

Photo: Daniel Hardy, 1984; negative with
Texas Historical Commission, Austin.

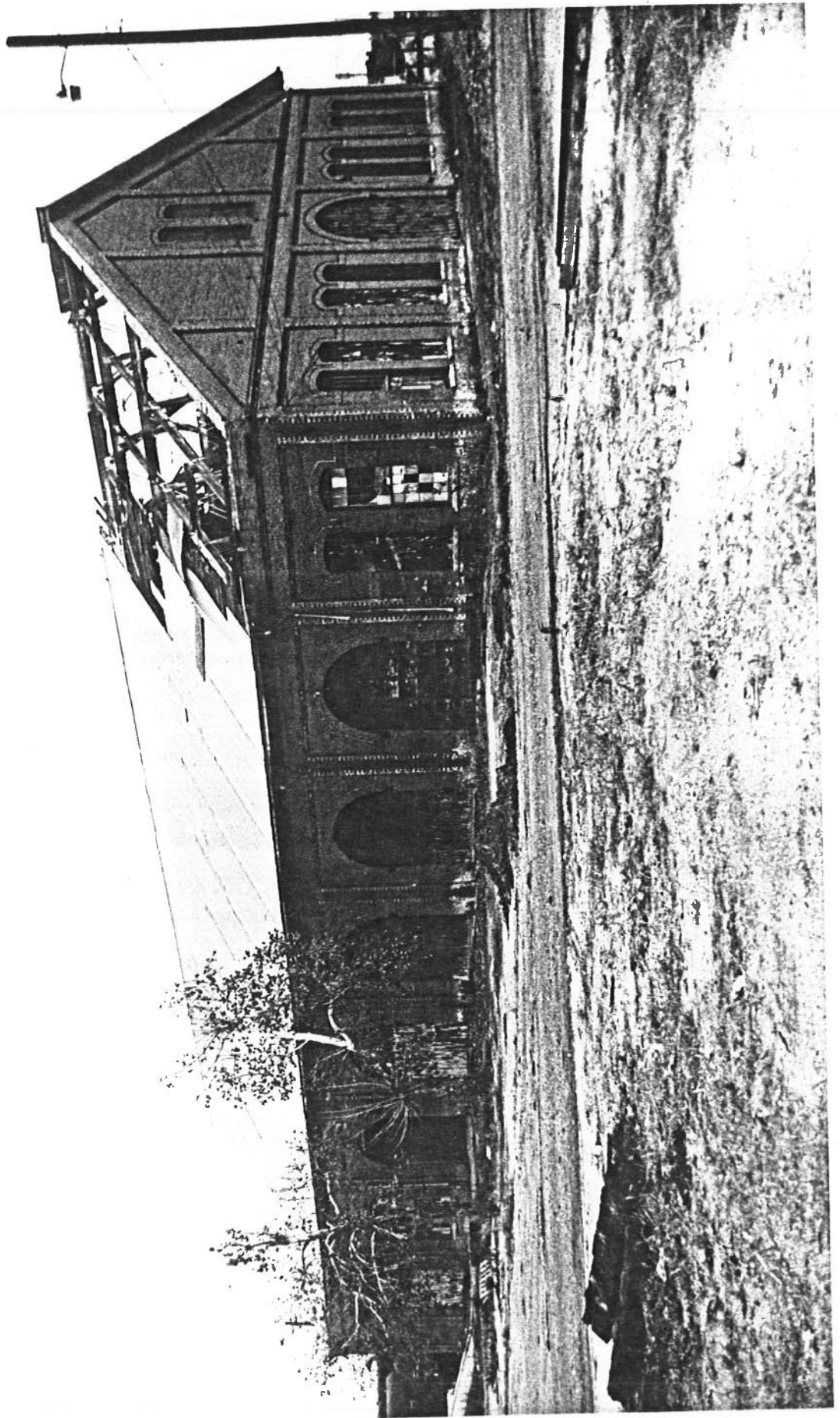
Site No. 649, 722 W. Madison, camera looking
north.

Photo 27 of 56



"Historic Resources of Ennis, Texas" Multiple-
Resource Nomination; city limits of Ennis,
Ellis County, Texas.

Photo: Daniel Hardy, 1984; negative with
Texas Historical Commission, Austin.
Site No. 1106, 500 N. Main E., camera looking
northeast.
Photo 28 of 56



"Historic Resources of Ennis, Texas" Multiple-
Resource Nomination; city limits of Ennis,
Ellis County, Texas.

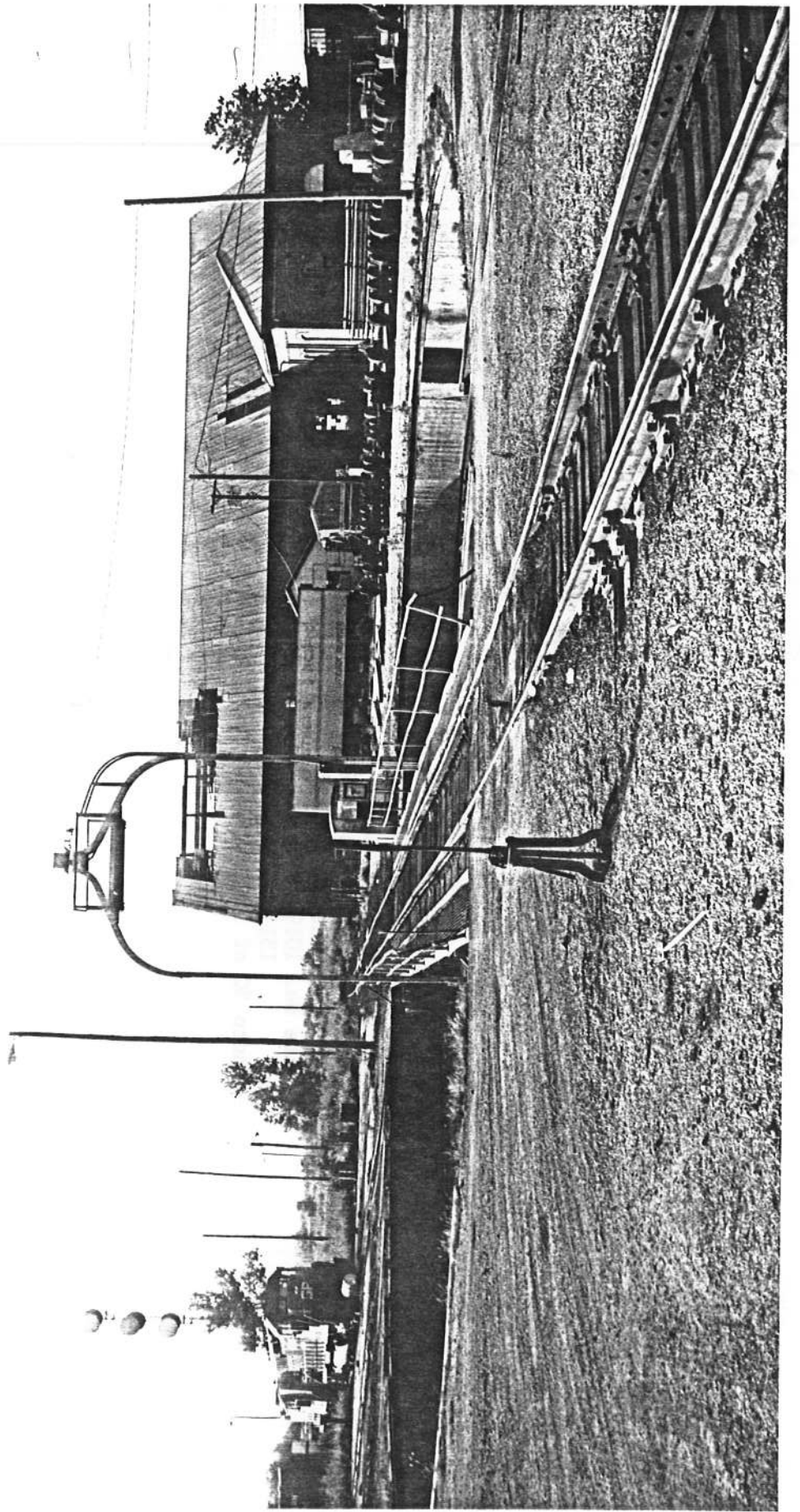
Photo: Daniel Hardy, 1984; negative with

Texas Historical Commission, Austin.

Site No. 1019, Southern Pacific Shop Building,

1311 N. Main W., camera looking southeast

Photo 29 of 56



"Historic Resources of Ennis, Texas" Multiple-
Resource Nomination; city limits of Ennis,
Ellis County, Texas.

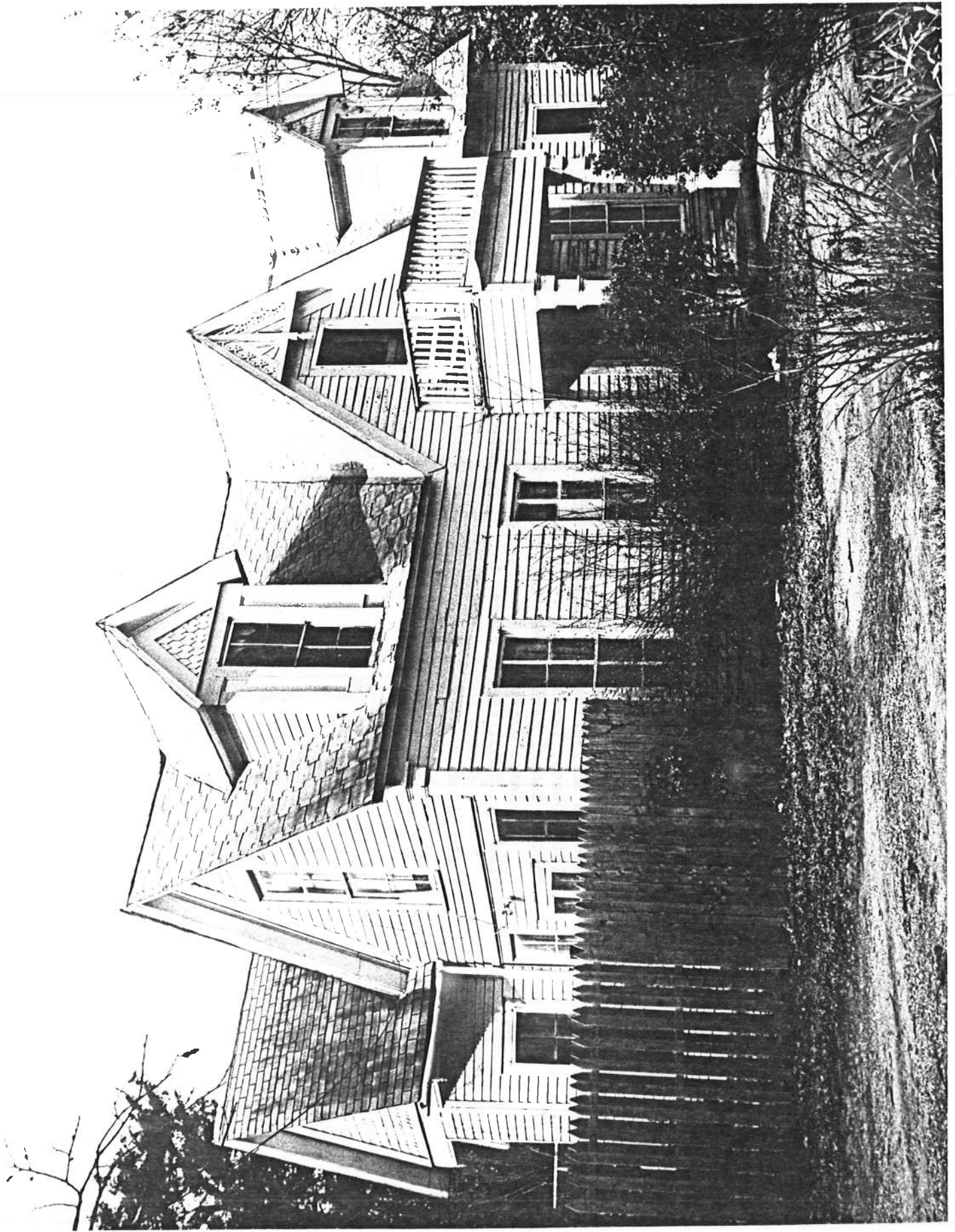
Photo: Daniel Hardy, 1984; negative with

Texas Historical Commission, Austin.

Site No. 1019, Southern Pacific Roundhouse,

1311 N. Main W., camera looking north

Photo 30 of 56

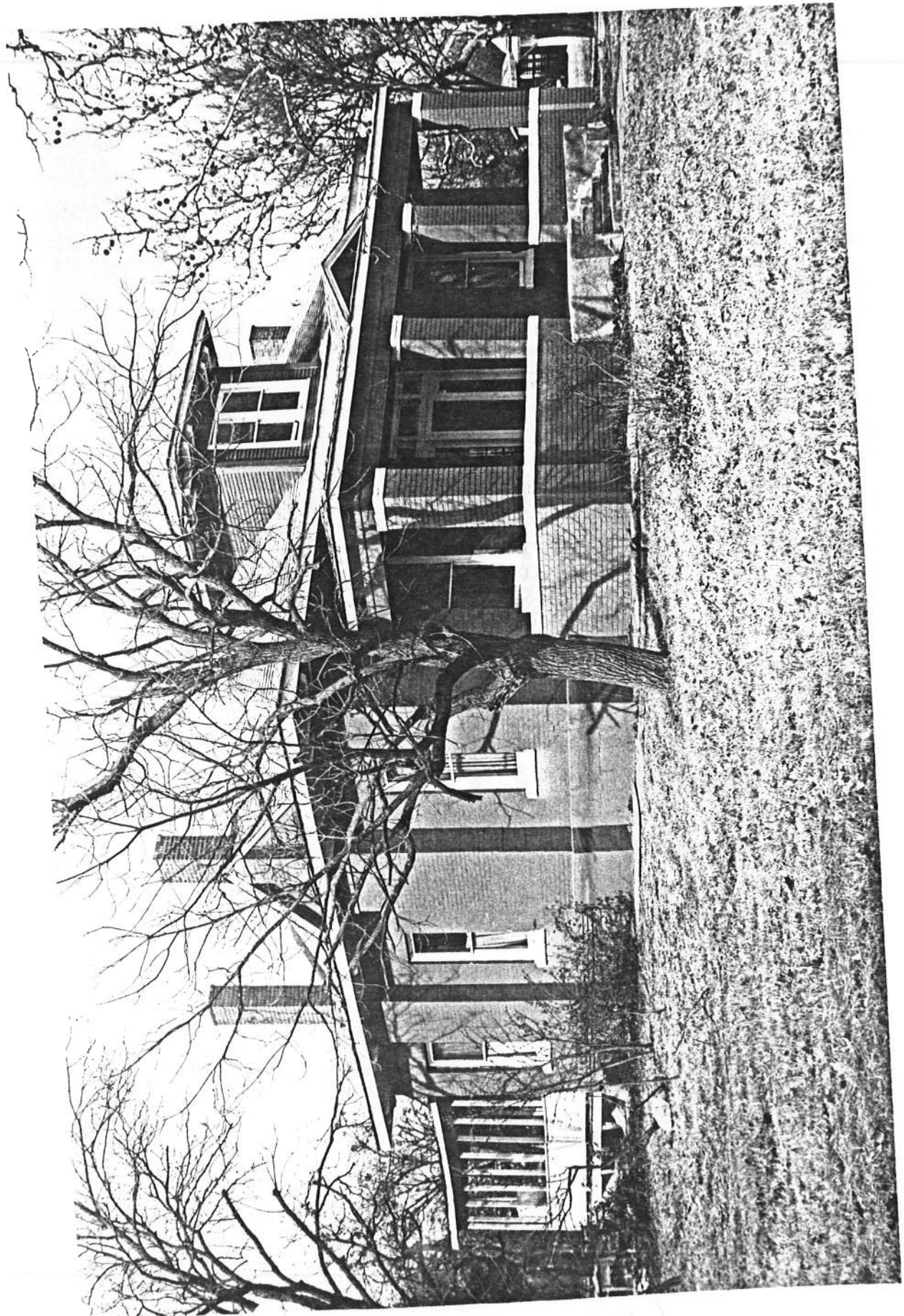


"Historic Resources of Ennis, Texas" Multiple-
Resource Nomination; city limits of Ennis,
Ellis County, Texas.

Photo: Daniel Hardy, 1984; negative with
Texas Historical Commission, Austin.

Site No. 1065, Farrar House, 601 S. Main W.,
camera looking west.

Photo 31 of 56

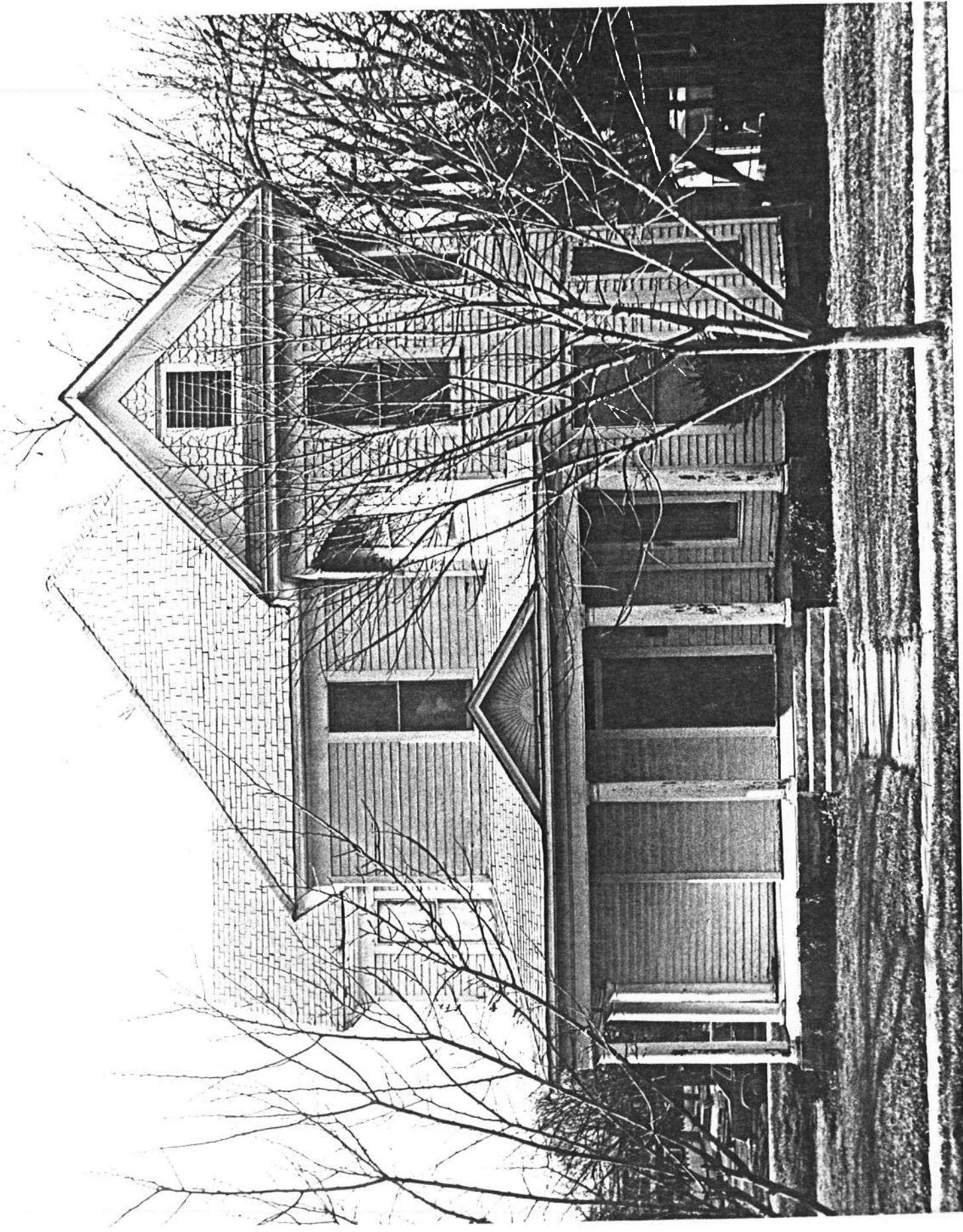


"Historic Resources of Ennis, Texas" Multiple-
Resource Nomination; city limits of Ennis,
Ellis County, Texas.

Photo: Daniel Hardy, 1984.

Texas Historical Commission, Austin.
Site No. 1068, 801 S. Main W.,

camera looking northwest
Photo 32 of 56



"Historic Resources of Ennis, Texas" Multiple-
Resource Nomination; city limits of Ennis,
Ellis County, Texas.

Photo: Daniel Hardy, 1984; negative with
Texas Historical Commission, Austin.
Site No. 905, Ransom House, 501 N. McKinney,
camera looking southwest.

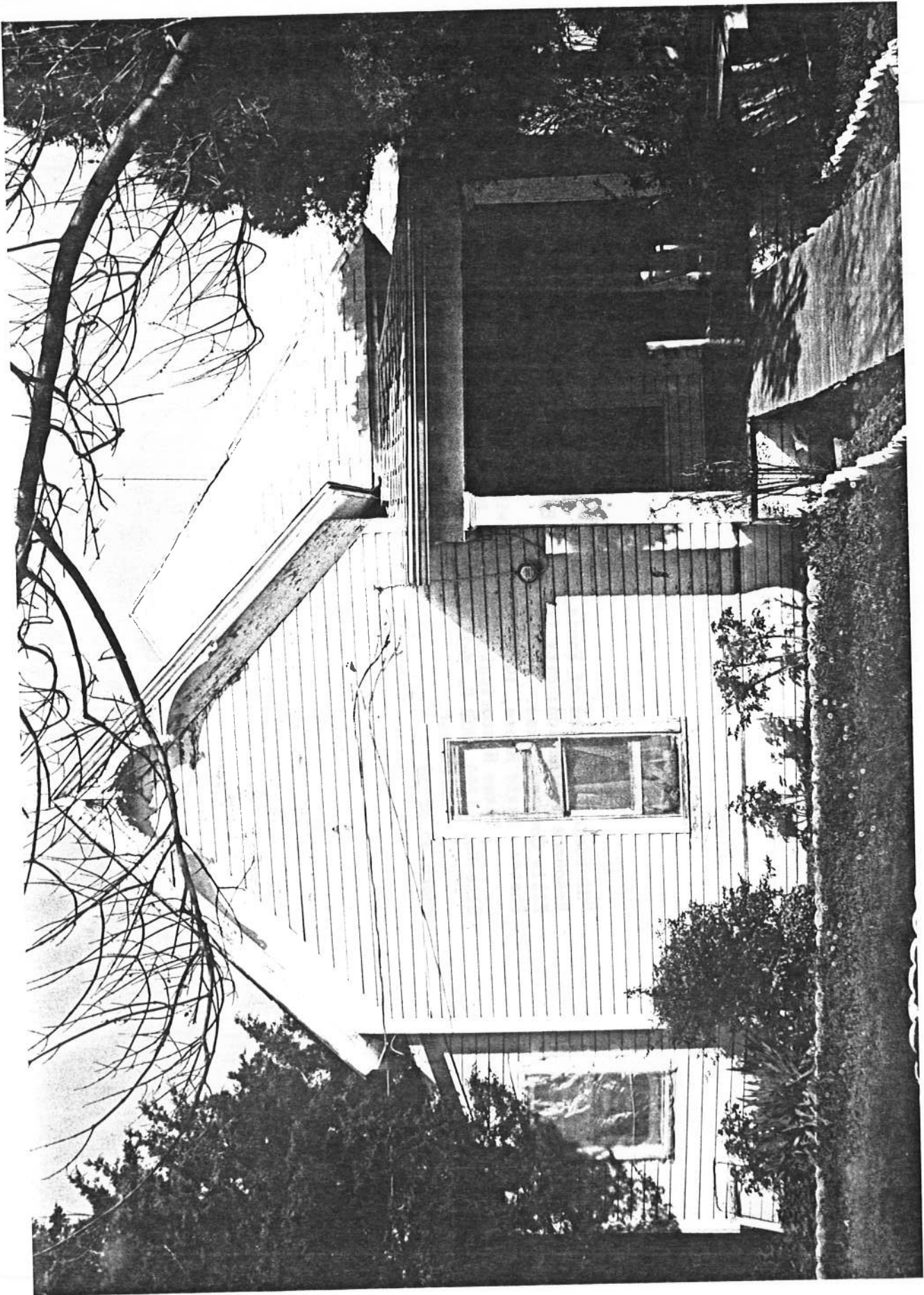
Photo 33 of 56



"Historic Resources of Ennis, Texas" Multiple-
Resource Nomination; city limits of Ennis,
Ellis County, Texas.

Photo: Daniel Hardy, 1984; negative with
Texas Historical Commission, Austin.
Site No. 889, Morton House, 1007 N. McKinney,
camera looking west.

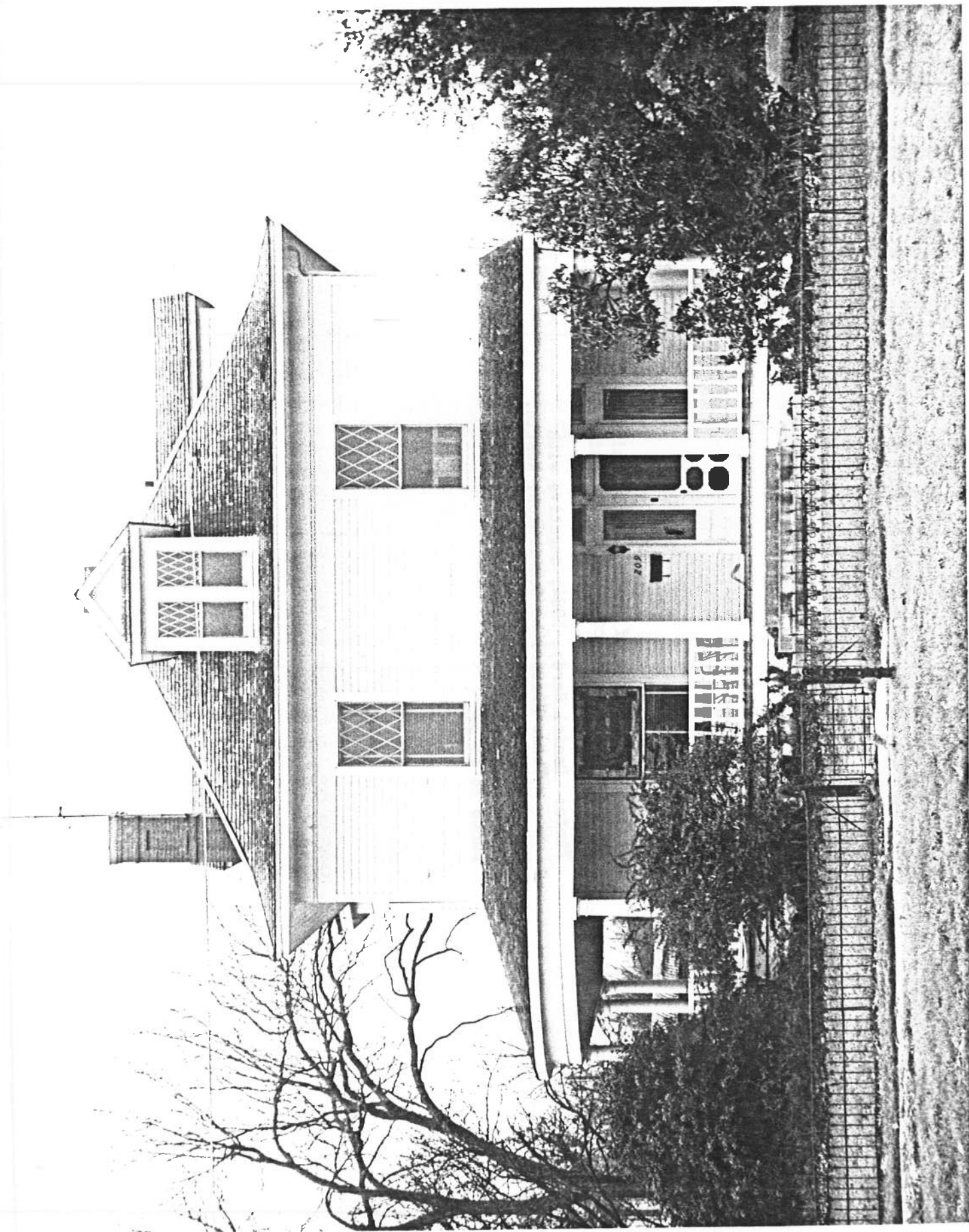
Photo 34 of 56



"Historic Resources of Ennis, Texas" Multiple-
Resource Nomination; city limits of Ennis,
Ellis County, Texas.

Photo: David Moore, 1984; negative with
Texas Historical Commission, Austin.
Site No. 1269, 908 S. Mulberry, camera looking
northeast.

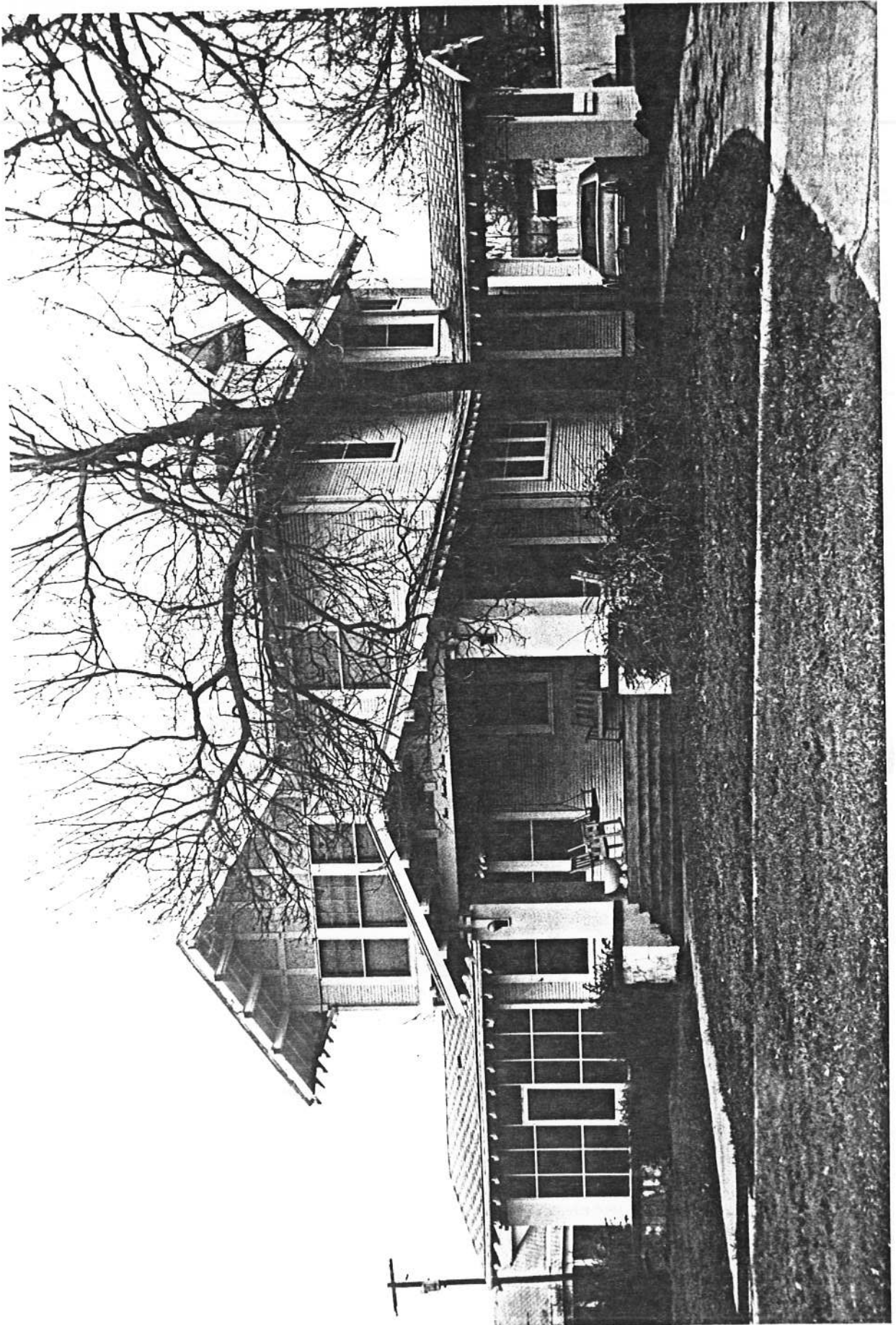
Photo 35 of 56



"Historic Resources of Ennis, Texas" Multiple-
Resource Nomination; city limits of Ennis,
Ellis County, Texas.

Photo: Daniel Hardy, 1984; negative with
Texas Historical Commission, Austin.
Site No. 808, Telfair House, 209 N. Preston,
camera looking southwest.

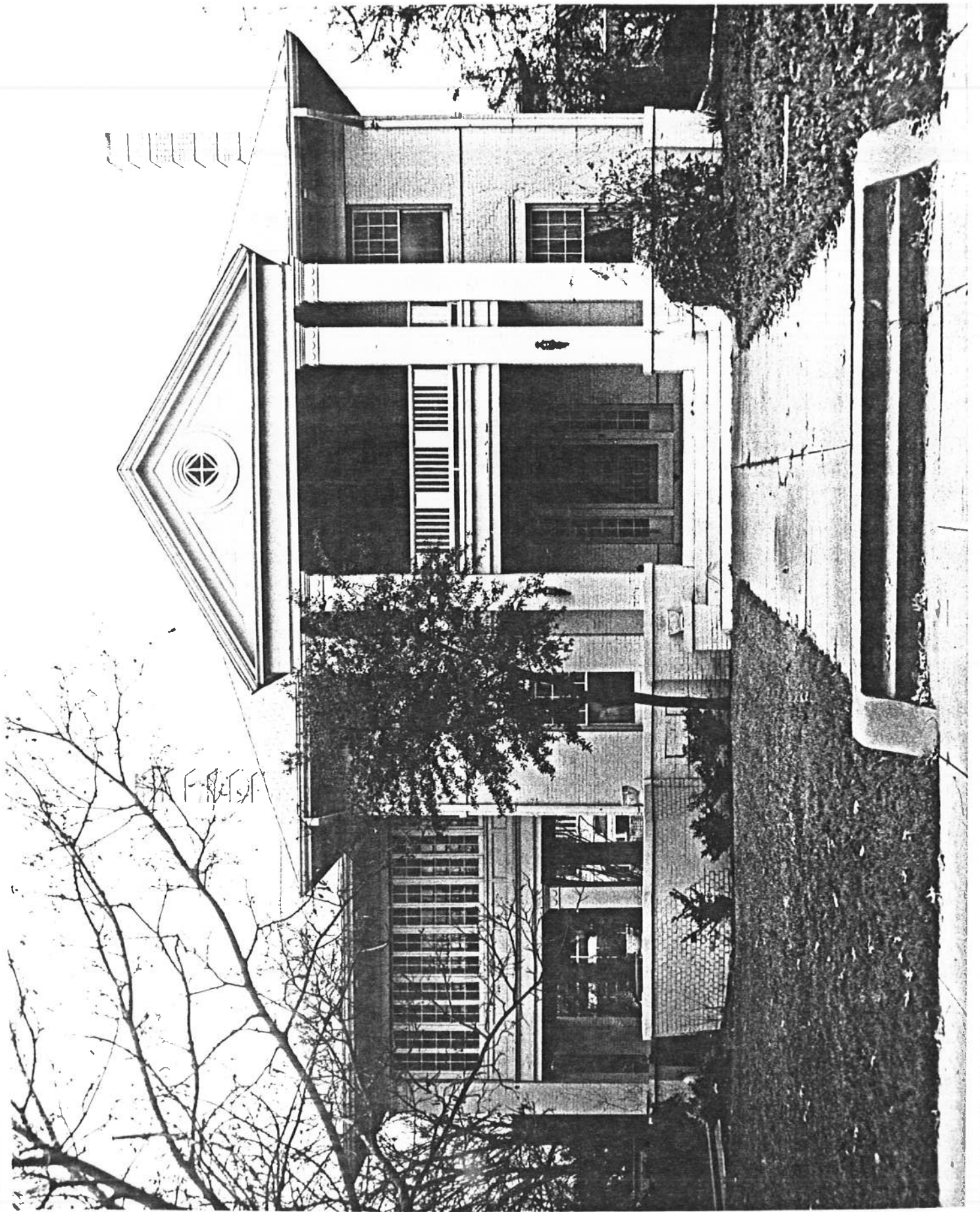
Photo 36 of 56



"Historic Resources of Ennis, Texas" Multiple-
Resource Nomination; city limits of Ennis,
Ellis County, Texas.

Photo: Daniel Hardy, 1984; negative with
Texas Historical Commission, Austin.
Site No. 806, Fain House, 403 N. Preston,
camera looking south.

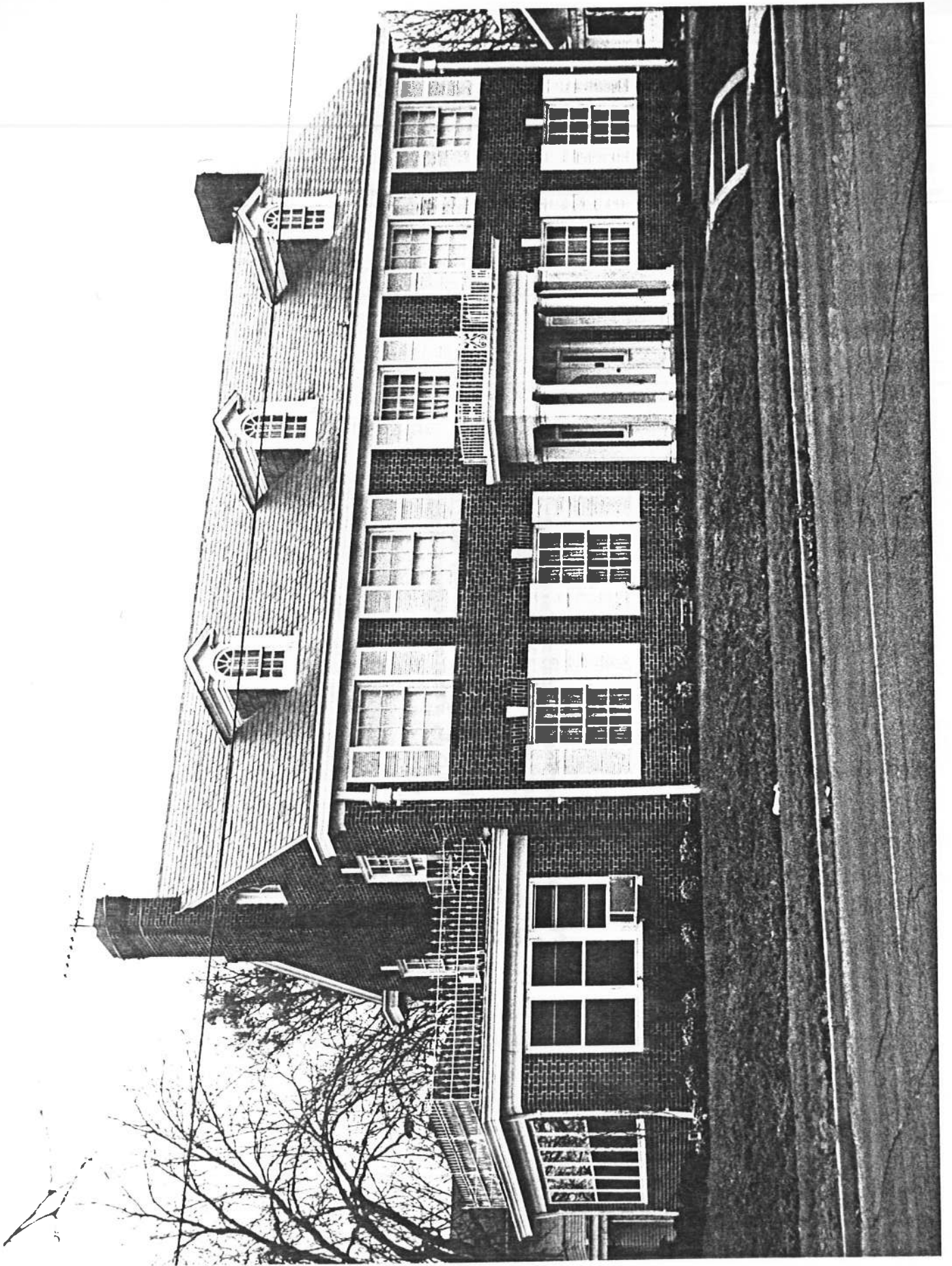
Photo 37 of 56



"Historic Resources of Ennis, Texas" Multiple-
Resource Nomination; city limits of Ennis,
Ellis County, Texas.

Photo: Daniel Hardy, 1984; negative with
Texas Historical Commission, Austin.
Site No. 805, 501 N. Preston, camera looking
southwest.

Photo 38 of 56



"Historic Resources of Ennis, Texas" Multiple-
Resource Nomination; city limits of Ennis,
Ellis County, Texas.

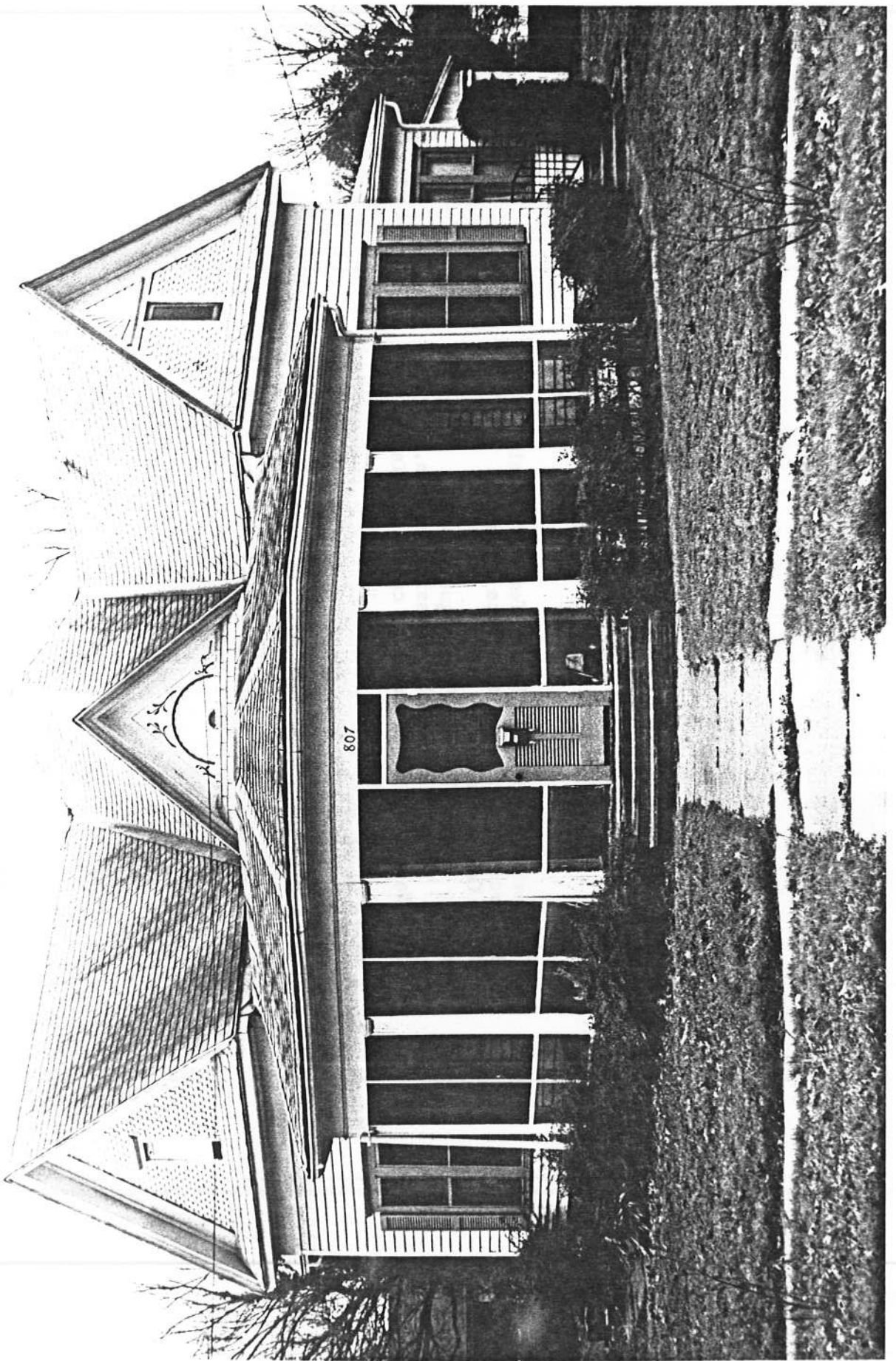
Photo: Daniel Hardy, 1984; negative with
Texas Historical Commission, Austin.

Site No. 804, 605 N. Preston, camera looking
west.

Photo 39 of 56

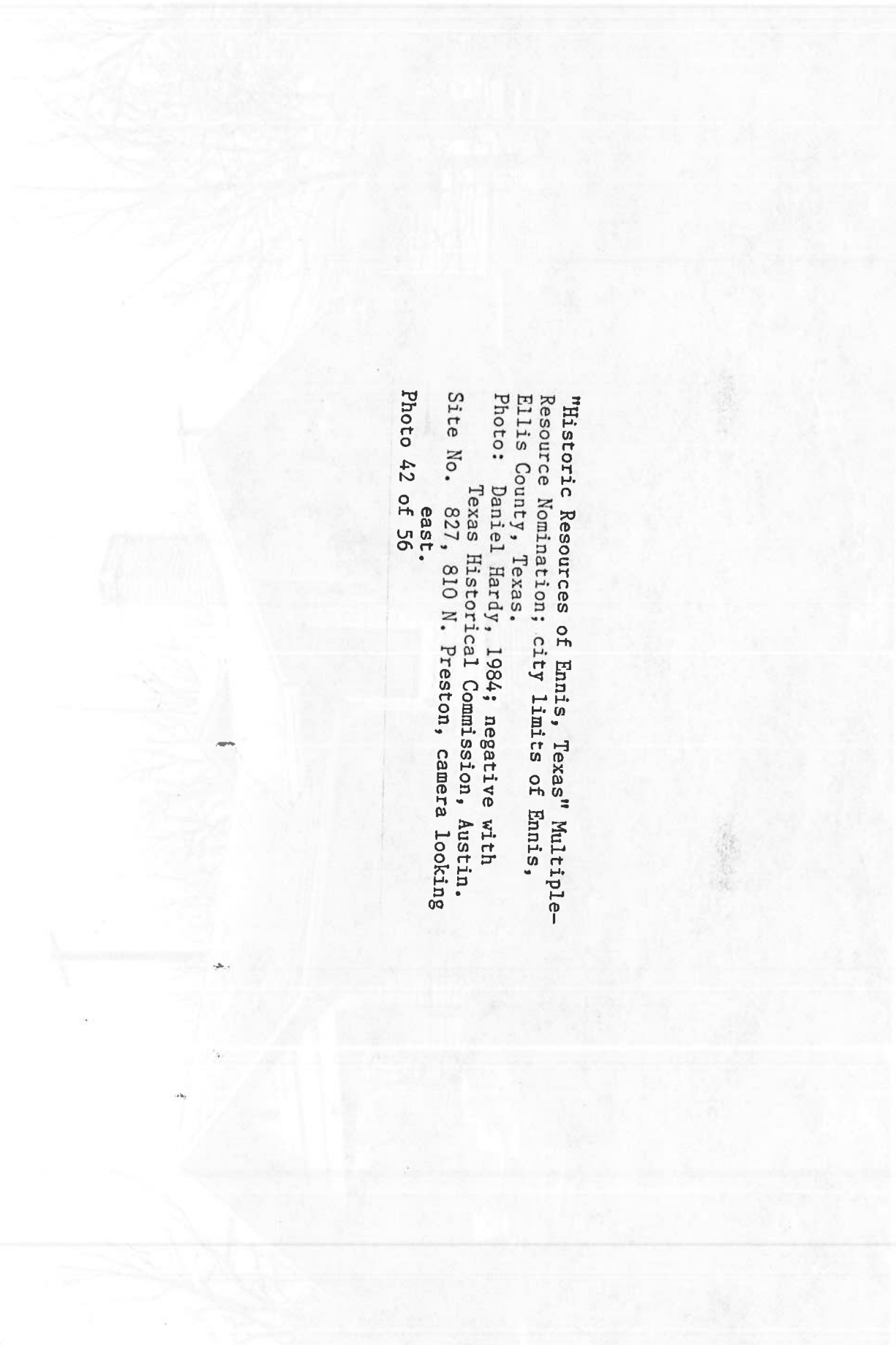


"Historic Resources of Ennis, Texas" Multiple-
Resource Nomination; city limits of Ennis,
Ellis County, Texas.
Photo: Daniel Hardy, 1984; negative with
Texas Historical Commission, Austin.
Site No. 830, Neal House, 704 N. Preston,
camera looking north.
Photo 40 of 56



"Historic Resources of Ennis, Texas" Multiple-
Resource Nomination; city limits of Ennis,
Ellis County, Texas.
Photo: Daniel Hardy, 1984; negative with
Texas Historical Commission, Austin.
Site No. 797, 807 N. Preston, camera looking
southwest.
Photo 41 of 56





"Historic Resources of Ennis, Texas" Multiple-
Resource Nomination; city limits of Ennis,
Ellis County, Texas.
Photo: Daniel Hardy, 1984; negative with
Texas Historical Commission, Austin.
Site No. 827, 810 N. Preston, camera looking
east.
Photo 42 of 56