

LAND FOR SALE 255.67 AC

ENNIS COMMERCE PARK

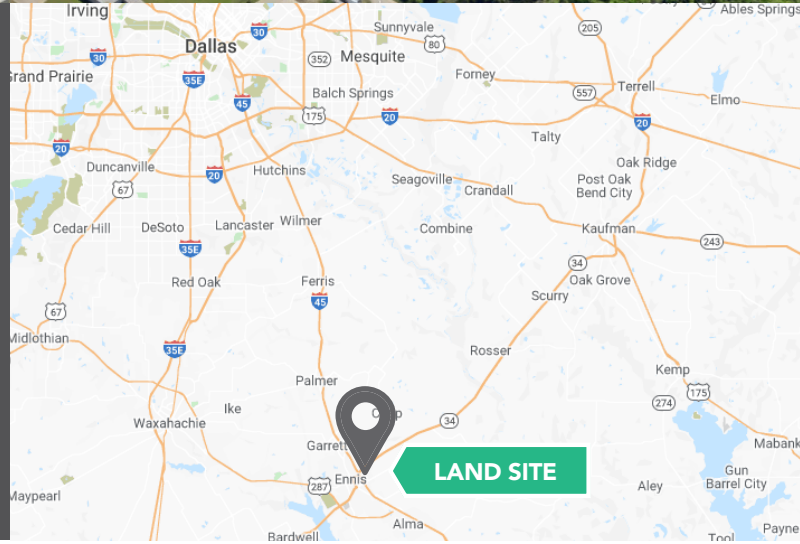
OAK GROVE RD. ENNIS, TX

FEDERAL, STATE, & LOCAL INCENTIVES



PROPERTY FEATURES

- ACREAGE 255.67 AC
- UTILITIES Gas, Sewer, Water to Site
- ZONING M-2 Heavy Manufacturing
- LOCATION Direct Access to I-45, I-35, I-20, I-30, & Hwy 287
- NOTES Development Ready; Can be Subdivided



JOSEPH COOPER

joseph@landrycommercial.com
(214) 983 - 1362
12404 Park Central Dr
Dallas, TX 75215

SHANNON JOHNSTON

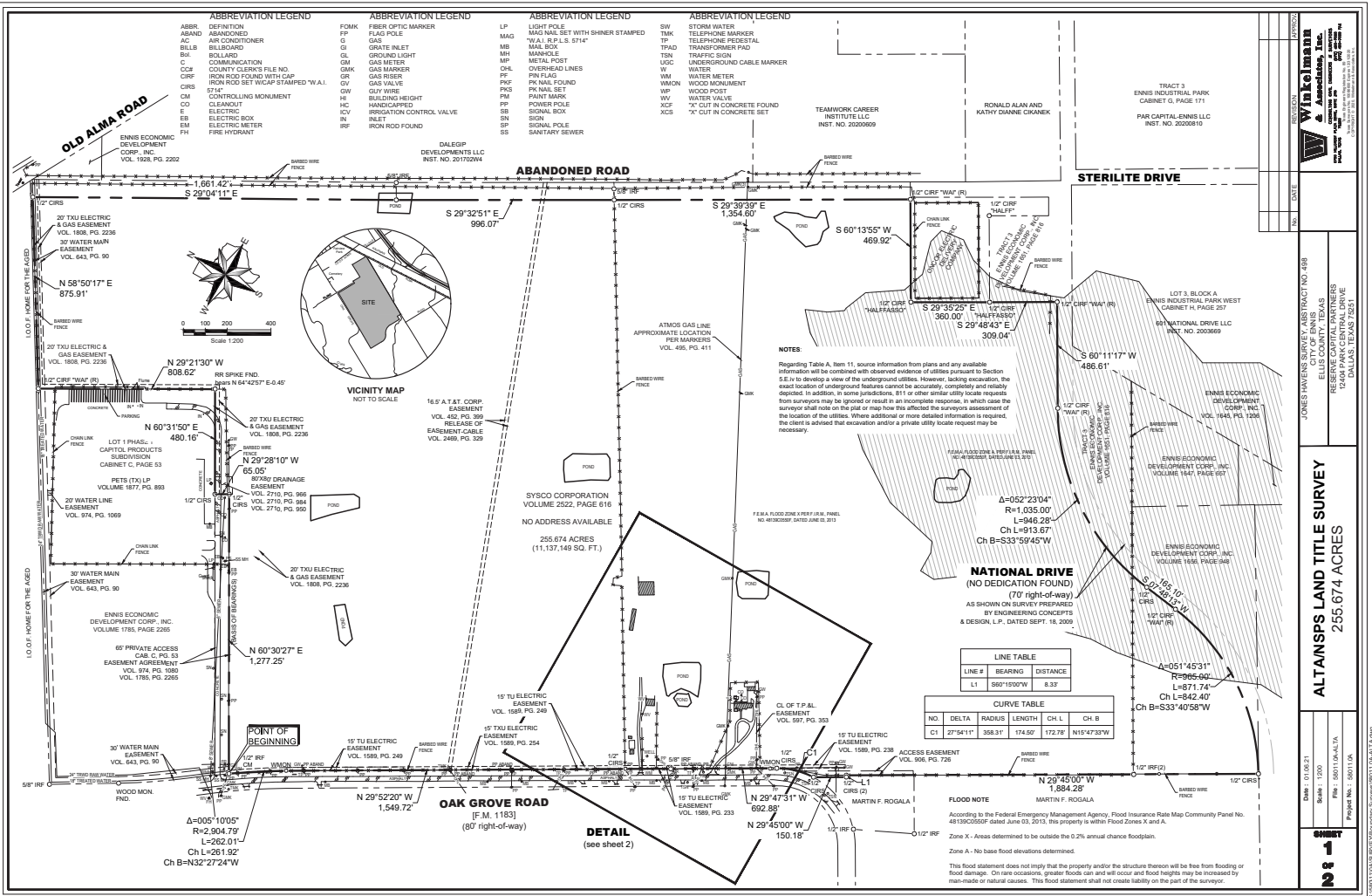
shannon@landrycommercial.com
(214) 983 - 1367
12404 Park Central Dr
Dallas, TX 75215



The information provided herein was obtained from sources believed reliable; however, Landry Commercial makes no guarantees, warranties or representations as to the completeness or accuracy thereof. The presentation of this property is submitted subject to errors, omissions, change of price or conditions, prior sale or lease, or withdrawal without notice.

LAND SURVEY

Ennis, TX - 255.67 ACRES Heavy Industrial Zoning



JOSEPH COOPER
joseph@landrycommercial.com
(214) 983 - 1362
12404 Park Central Dr
Dallas, TX 75215

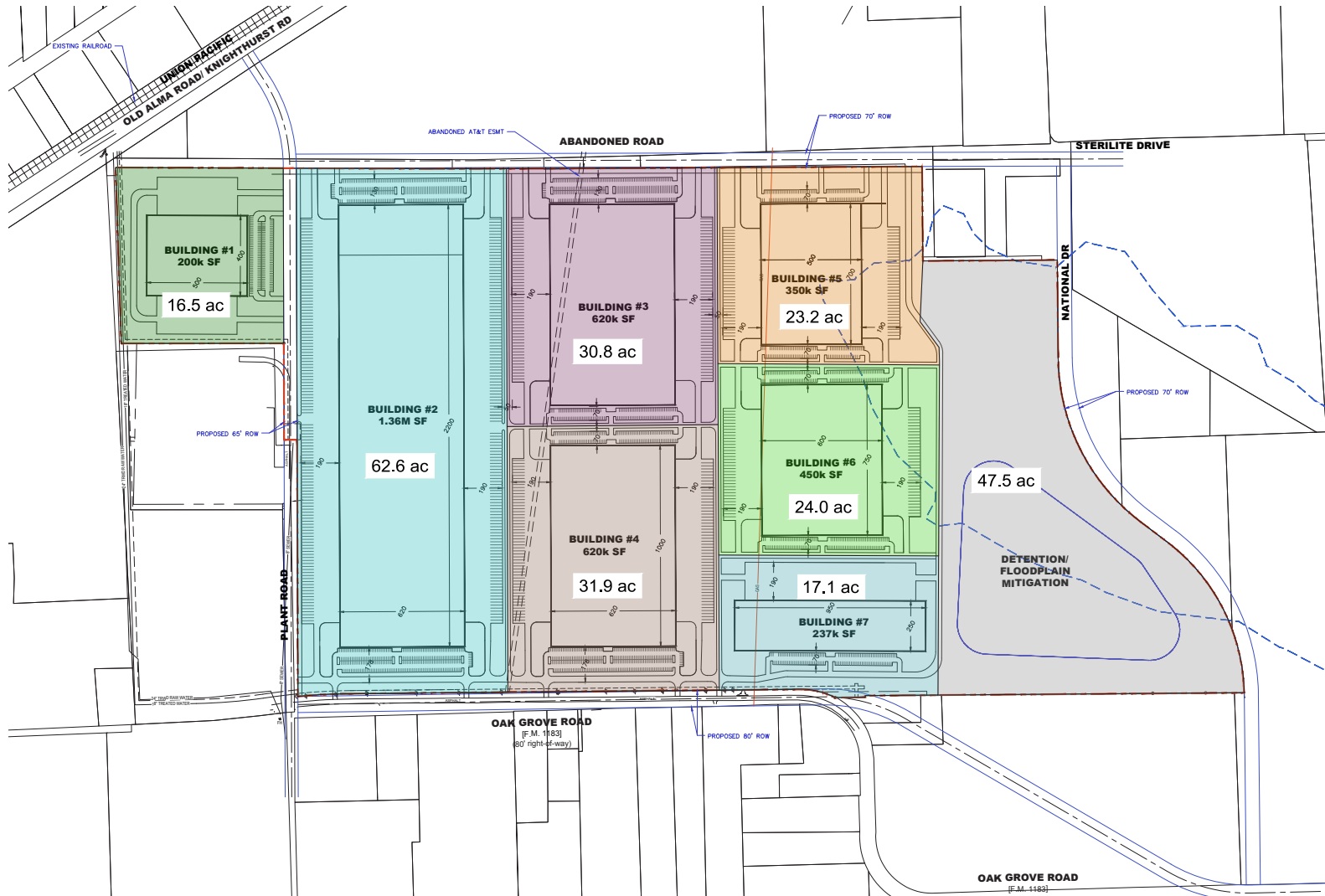
SHANNON JOHNSTON
shannon@landrycommercial.com
(214) 983 - 1367
12404 Park Central Dr
Dallas, TX 75215



The information provided herein was obtained from sources believed reliable; however, Landry Commercial makes no guarantees, warranties or representations as to the completeness or accuracy thereof. The presentation of this property is submitted subject to errors, omissions, change of price or conditions, prior sale or lease, or withdrawal without notice.

SITE PLAN

Ennis, TX - 255.67 ACRES Heavy Industrial Zoning



Build to Suit Options from 1.36 Million SF to 4 Million SF of Industrial Warehouse Space

JOSEPH COOPER
joseph@landrycommercial.com
(214) 983 - 1362
12404 Park Central Dr
Dallas, TX 75215

SHANNON JOHNSTON
shannon@landrycommercial.com
(214) 983 - 1367
12404 Park Central Dr
Dallas, TX 75215



INCENTIVES

FEDERAL

- New Market Credit Program

STATE

- Texas Enterprise Fund
- Skills Development Fund
- Texas Capital Fund
- Texas Enterprise Zone Program

LOCAL

- City of Ennis Industrial Tax Abatement
- Ellis County Tax Abatement
- Infrastructure Rehabilitation Grant
- Up to 100% Abatement on Real Property and Improvements



JOSEPH COOPER

joseph@landrycommercial.com
(214) 983 - 1362
12404 Park Central Dr
Dallas, TX 75215

SHANNON JOHNSTON

shannon@landrycommercial.com
(214) 983 - 1367
12404 Park Central Dr
Dallas, TX 75215



METRO- PLEX MAP

Ennis, TX - 255.67 ACRES Heavy Industrial Zoning



JOSEPH COOPER
joseph@landrycommercial.com
(214) 983 - 1362
12404 Park Central Dr
Dallas, TX 75215

SHANNON JOHNSTON
shannon@landrycommercial.com
(214) 983 - 1367
12404 Park Central Dr
Dallas, TX 75215



LAND FOR SALE Ennis, TX - 255.67 ACRES

Approved by the Texas Real Estate Commission for Voluntary Use

Texas law requires all real estate licenses to give the following information about brokerage services to prospective buyers, tenants, sellers and landlords

INFORMATION ABOUT BROKERAGE SERVICES

Before working with a real estate broker, you should know that the duties of a broker depend on whom the broker represents. If you are a prospective buyer or tenant (buyer), you should know that the broker who lists the property for sale or lease is the owner's agent. A broker who acts as a subagent represents the owner in cooperation with the listing broker. A broker may act as an intermediary between the parties if the parties consent in writing. A broker can assist you in locating a property, preparing a contract or lease, or obtaining financing without representing you. A broker is obligated by law to treat you honestly.

IF THE BROKER REPRESENTS THE OWNER

The broker becomes the owner's agent by entering into an agreement with the owner, usually through a written - listing agreement, or by agreeing to act as a subagent by accepting an offer of subagency from the listing broker. A subagent may work in a different real estate office. A listing broker or subagent can assist the buyer but does not represent the buyer and must place the interests of the owner first. The buyer should not tell the owner's agent must disclose to the owner any material information known to the agent.

IF THE BROKER ACTS AS AN INTERMEDIARY:

A broker may act as an intermediary between the parties if the broker complies with the Texas Real Estate License Act. The broker must obtain the written consent of each party to the transaction to act as an intermediary. The written consent must state who will pay the broker and, in conspicuous bold or underlined print, set forth the broker's obligations as an intermediary. The broker is required to treat each party honestly and fairly and to comply with the Texas Real Estate License Act.

A broker who acts as an intermediary in a transaction:

- (1) Shall treat all parties honestly
- (2) may not disclose that the owner will accept a price less than the asking price unless authorized in writing to do so by the owner,
- (3) may not disclose that the buyer will pay a price greater than the price submitted in a written offer unless authorized in writing to do so by the buyer, and
- (4) may not disclose any confidential information or any information that a party specifically instructs the broker in writing not to disclose unless authorized in writing to disclose the information or required to do so by the Texas Real Estate License Act or a court order or if the information materially relates to the condition of the property.

With the parties' consent, a broker acting as an intermediary between the parties may appoint a person who is licensed under the Texas Real Estate License Act and associated with the broker to communicate with and carry out instructions of one party and another person who is licensed under that Act and associated with the broker to communicate and carry out instructions of the other party.

IF YOU CHOOSE TO HAVE A BROKER REPRESENT YOU,

you should enter into a written agreement with the broker that clearly establishes the broker's obligations and your obligations. The agreement should state how and by whom the broker will be paid. You have the right to choose the type of representation, if any, you wish to receive. Your payment of a fee to a broker does not necessarily establish that the broker represents you. If you have any questions regarding the duties and responsibilities of the broker, you should resolve those questions before proceeding.

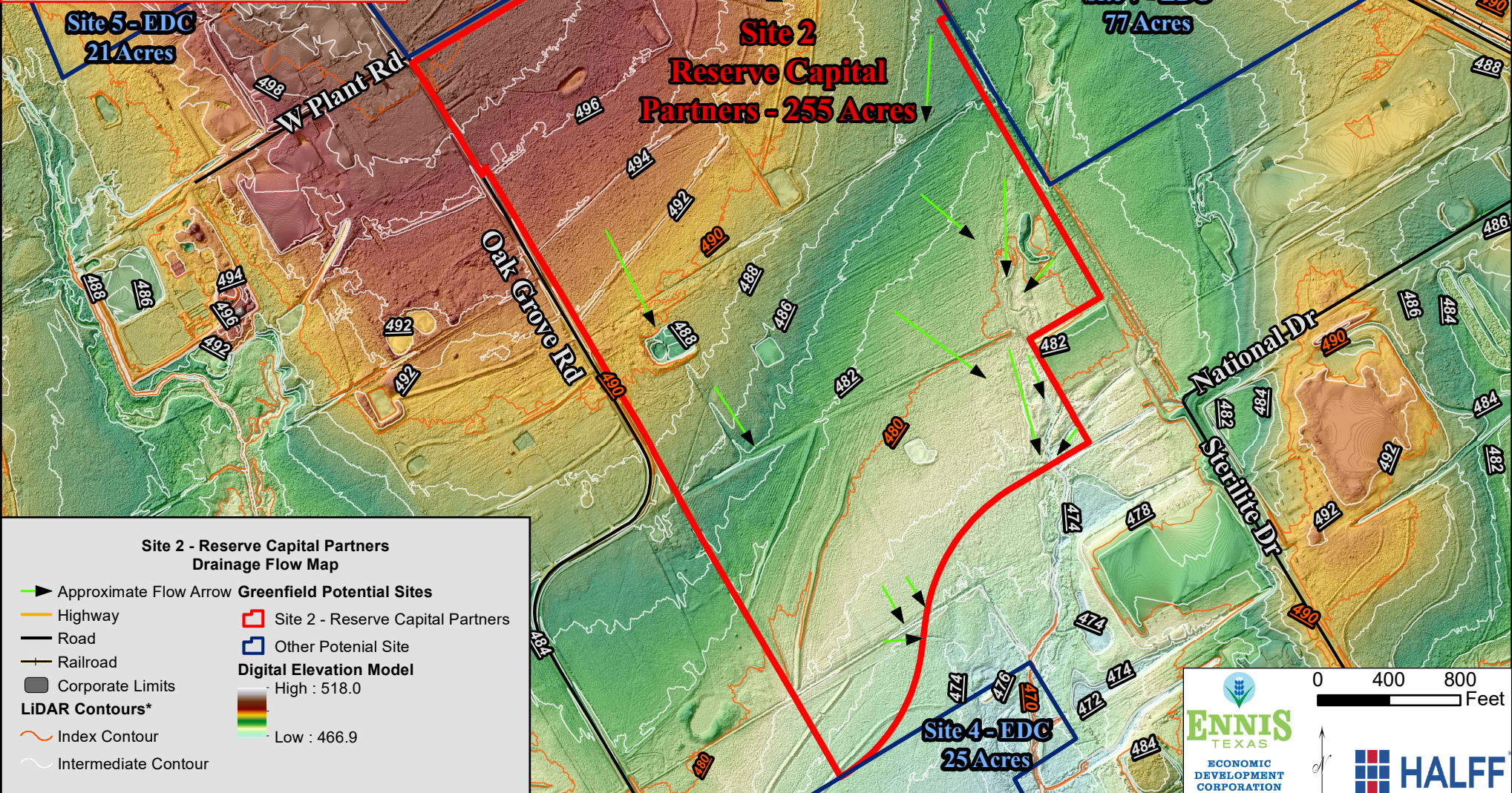
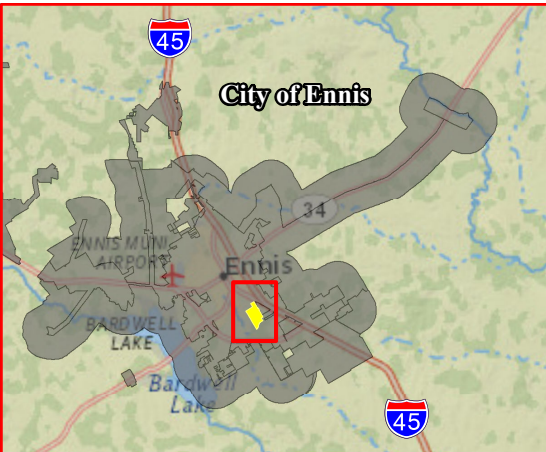
Real estate licensee asks that you acknowledge receipt of this information about brokerage services for the licensee's records.

Buyer, Seller, Landlord or Tenant

Date

Texas Real Estate Brokers and Salespersons are licensed and regulated by the Texas real Estate Commission (TREC). If you have a question or complaint regarding a real estate license, you should contact TREC at P.O. Box 12188, Austin, TX 78711-2188 or 812-486-3680.





0 400 800 Feet

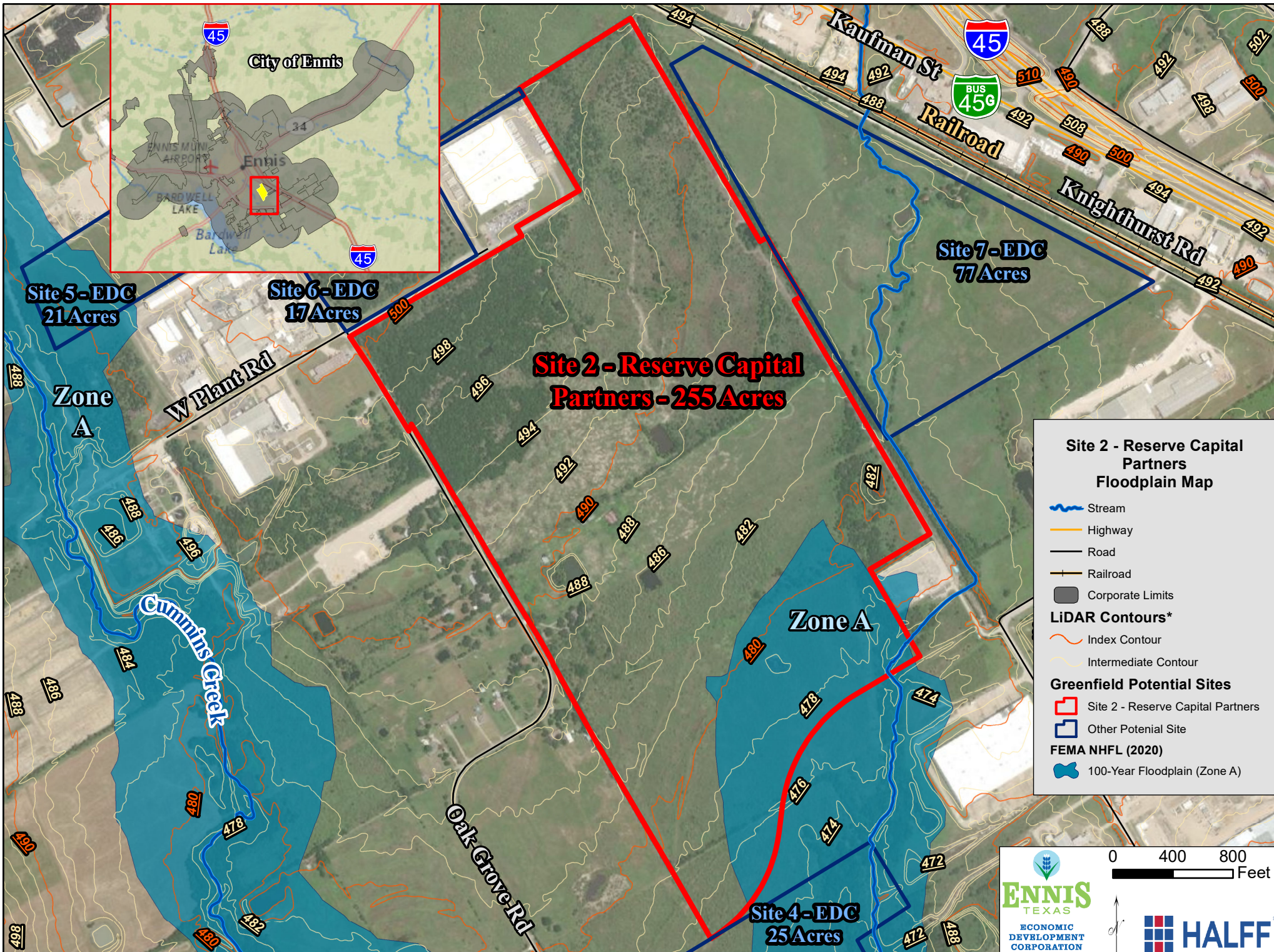
ENNIS TEXAS
ECONOMIC DEVELOPMENT CORPORATION

HALFF

* Elevation data & contours derived from NCTCOG (2017) & TNRS (2013) LiDAR

1 inch = 800 feet

Exhibit Creation Date: 4/2/2022



Site 2 - Reserve Capital Partners Floodplain Map

- Stream
- Highway
- Road
- Railroad
- Corporate Limits

LiDAR Contours*

- Index Contour
- Intermediate Contour

Greenfield Potential Sites

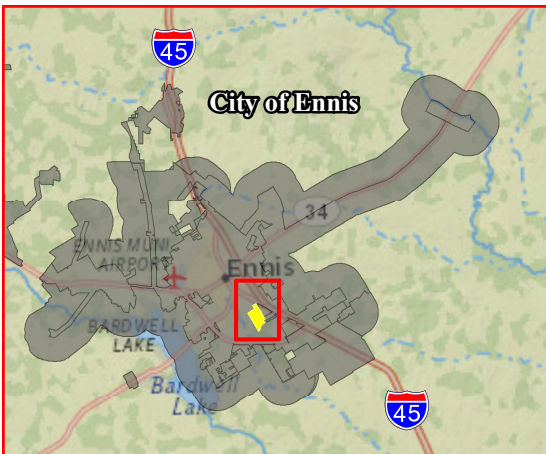
- Site 2 - Reserve Capital Partners
- Other Potential Site

FEMA NHFL (2020)

- 100-Year Floodplain (Zone A)

0 400 800 Feet

ENNIS TEXAS
ECONOMIC DEVELOPMENT CORPORATION



**Site 5 - EDC
21 Acres**

**Site 6 - EDC
17 Acres**

**Site 7 - EDC
77 Acres**

**Site 2 - Reserve Capital
Partners - 255 Acres**

**Site 4 - EDC
25 Acres**

Ownership	Reserve Capital Partners
Price	Unk
Annexed	City of Ennis
Zoning	Heavy Industrial
Water	On Site / City of Ennis
Sewer	On Site
Electricity	On Site
Gas	Atmos

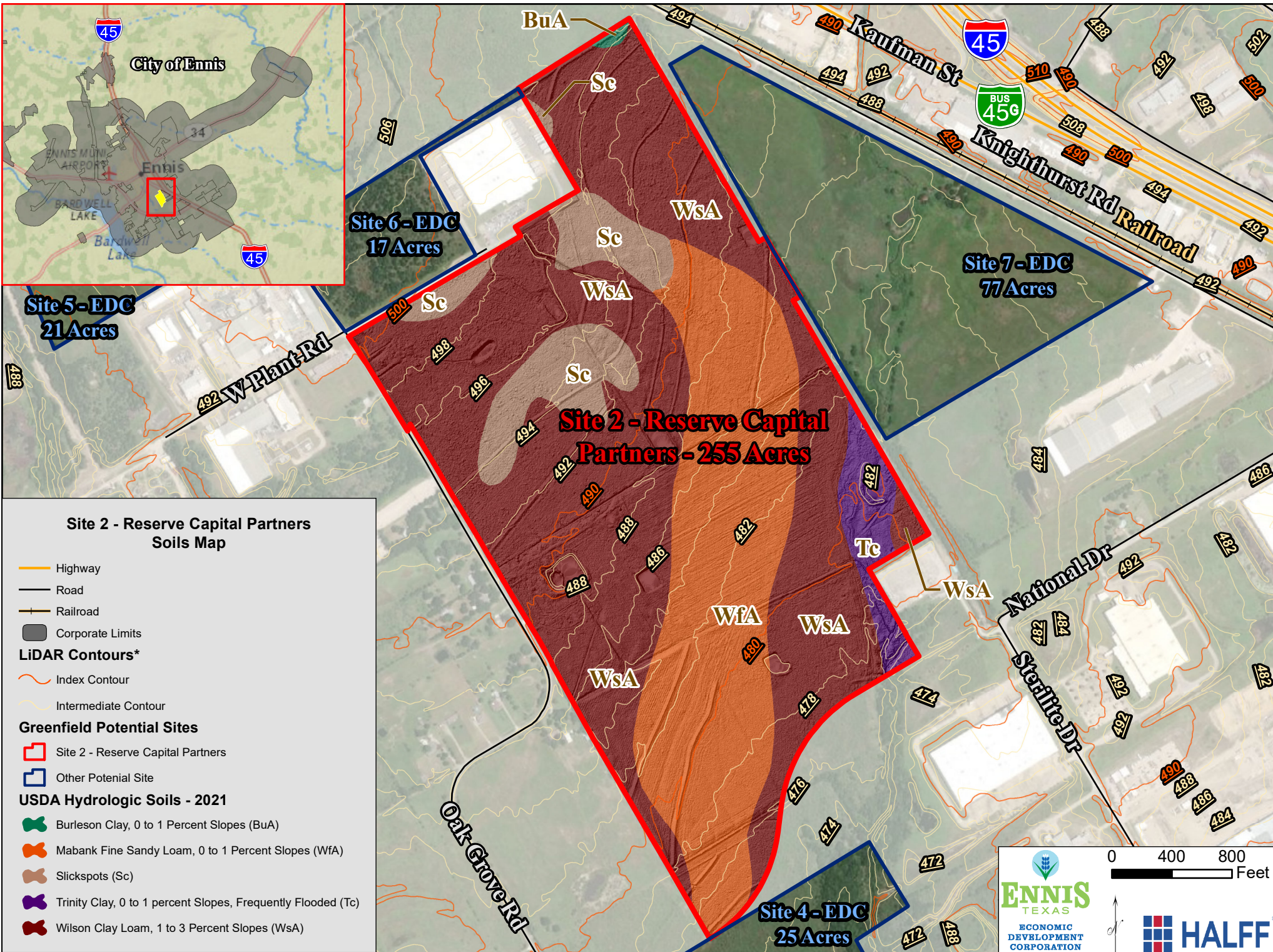
**Site 2 - Reserve Capital Partners
Site Map**

- Highway
- Road
- Railroad
- Corporate Limits

Greenfield Potential Sites

- Site 2 - Reserve Capital Partners
- Other Potential Site

0 400 800 Feet



Source of Aerial Imagery : Esri (July 2021)












* Elevation data & contours derived from NCTCOG (2017) & TNRRS (2013) LiDAR



1 inch = 800 feet

Exhibit Creation Date: 4/2/2022



**Site 2 - Reserve Capital Partners
Utilities Map**

-  Fire Hydrant
-  Manhole
-  Water Valve
-  Highway
-  Road
-  Railroad
-  Sewer Line
-  Water Line
-  Corporate Limits
- Lift Station - Ownership**
-  City of Ennis
-  Private

- Greenfield Potential Sites**
-  Site 2 - Reserve Capital Partners
-  Other Potential Site

