

HISTORIC RESOURCES OF ENNIS, TEXAS
 HARDY-HECK-MOORE, INC. PRESERVATION CONSULTANTS AUSTIN, TEXAS
 DRAWN BY AMBER TAYLOR FROM OFFICIAL CITY MAP, CITY OF ENNIS

JULY 1985
 UPDATED APRIL 1997

MAP KEY

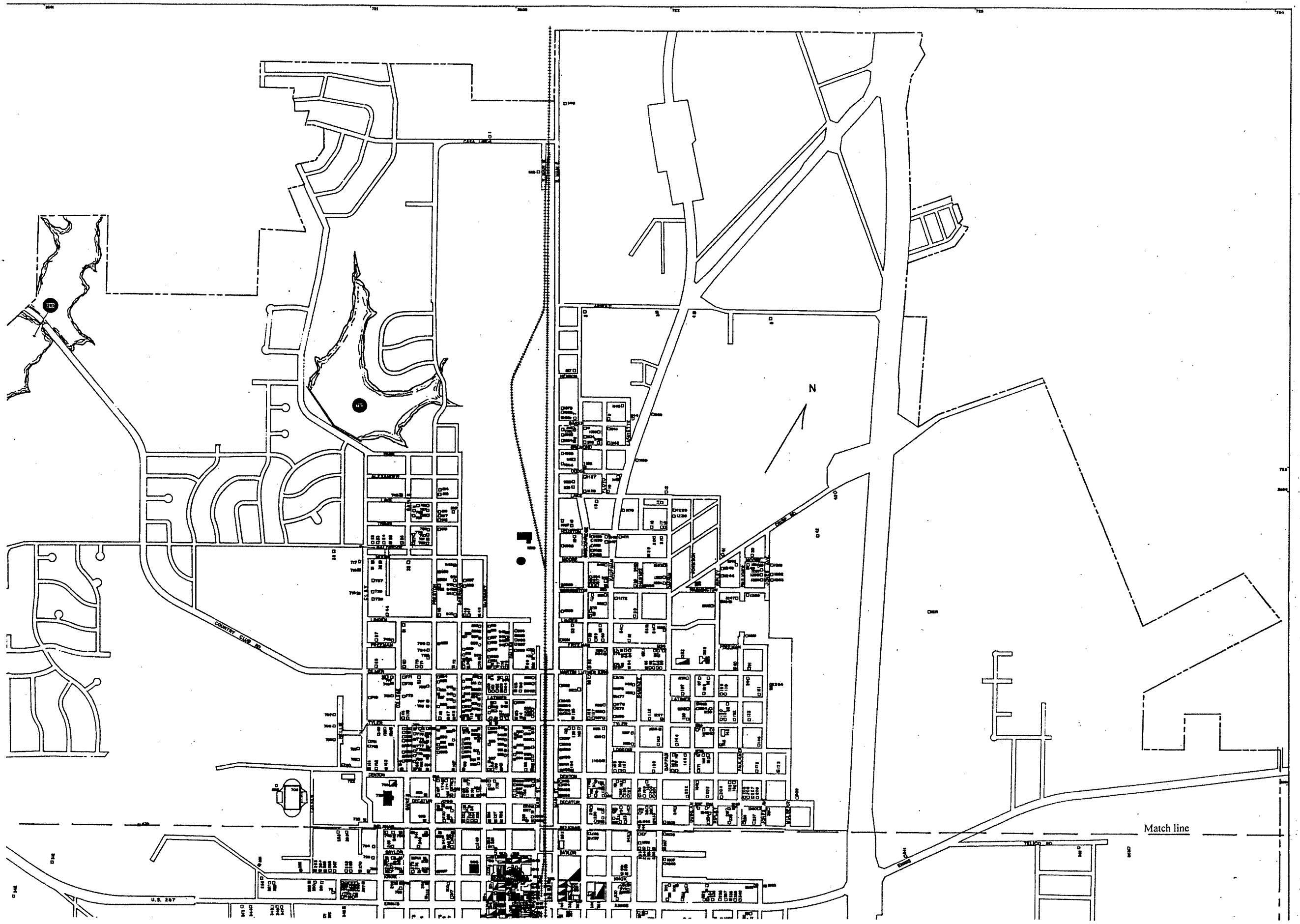
CITY LIMIT ————

PRESERVATION PRIORITIES:

HIGH	■
MEDIUM	▣
LOW	□

SCALE IN FEET

0 500 1000 1500 2000



Match line

N

U.S. 287

COUNTRY CLUB RD

