



**Project
Minnie McDowell
Park**



Honoring the Past

MINNIE MCDOWAL PARK

PARK CONSTRUCTED 1993 ON THE SITE OF THE TARA THEATRE. THE THEATRE BUILDING WAS SEVERELY DAMAGED BY WIND STORM IN 1992 AND WAS SUBSEQUENTLY DEMOLISHED. ORIGINALLY CONSTRUCTED IN 1902, THE BUILDING WAS USED FOR MERCANTILE PURPOSES UNTIL CIRCA 1928 WHEN CONVERTED TO THE PLAZA THEATRE. THE THEATRE WAS REMODELED AND NAMED TARA IN 1978.

THE THEATRE PROPERTY WAS PURCHASED BY THE MITCHELL FAMILY IN 1960 AND BECAME THE FIRST INDOOR THEATRE TO BE OWNED BY LEE ROY MITCHELL.

THE MITCHELL FAMILY THEATRE HOLDINGS EVOLVED INTO CINEMARK USA, INC., THE SIXTH LARGEST THEATRE CHAIN IN AMERICA WITH MORE THAN 1,100 SCREENS IN OPERATION IN 1993.

LEE ROY MITCHELL, CEO OF CINEMARK USA, INC., DONATED THE PROPERTY TO THE CITY OF ENNIS IN 1993 IN HONOR OF MINNIE MCDOWAL, LONG TIME THEATRE EMPLOYEE.

THIS PARK IS DEDICATED TO MINNIE MCDOWAL AND HER DEVOTION TO THE CITIZENS OF ENNIS, THE MOTION PICTURE INDUSTRY AND THE MITCHELL FAMILY.



Minnie McDowal Park

Current Park: (view from Knox/Dallas intersection)





Minnie McDowal Park

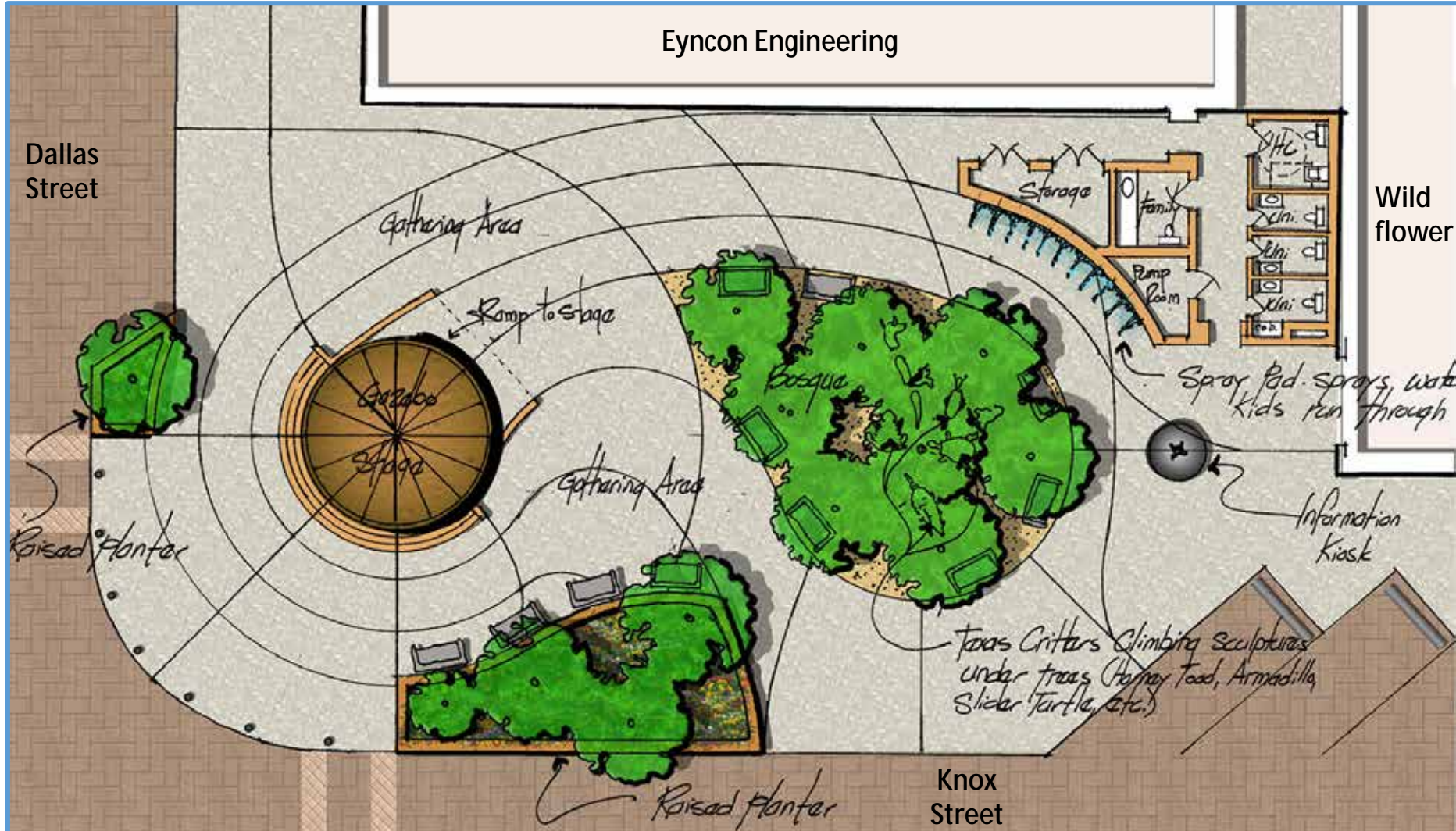
Current Park: (view from Knox)





Minnie McDowal Park 2.0

Conceptual Site Layout: (7,922sf)



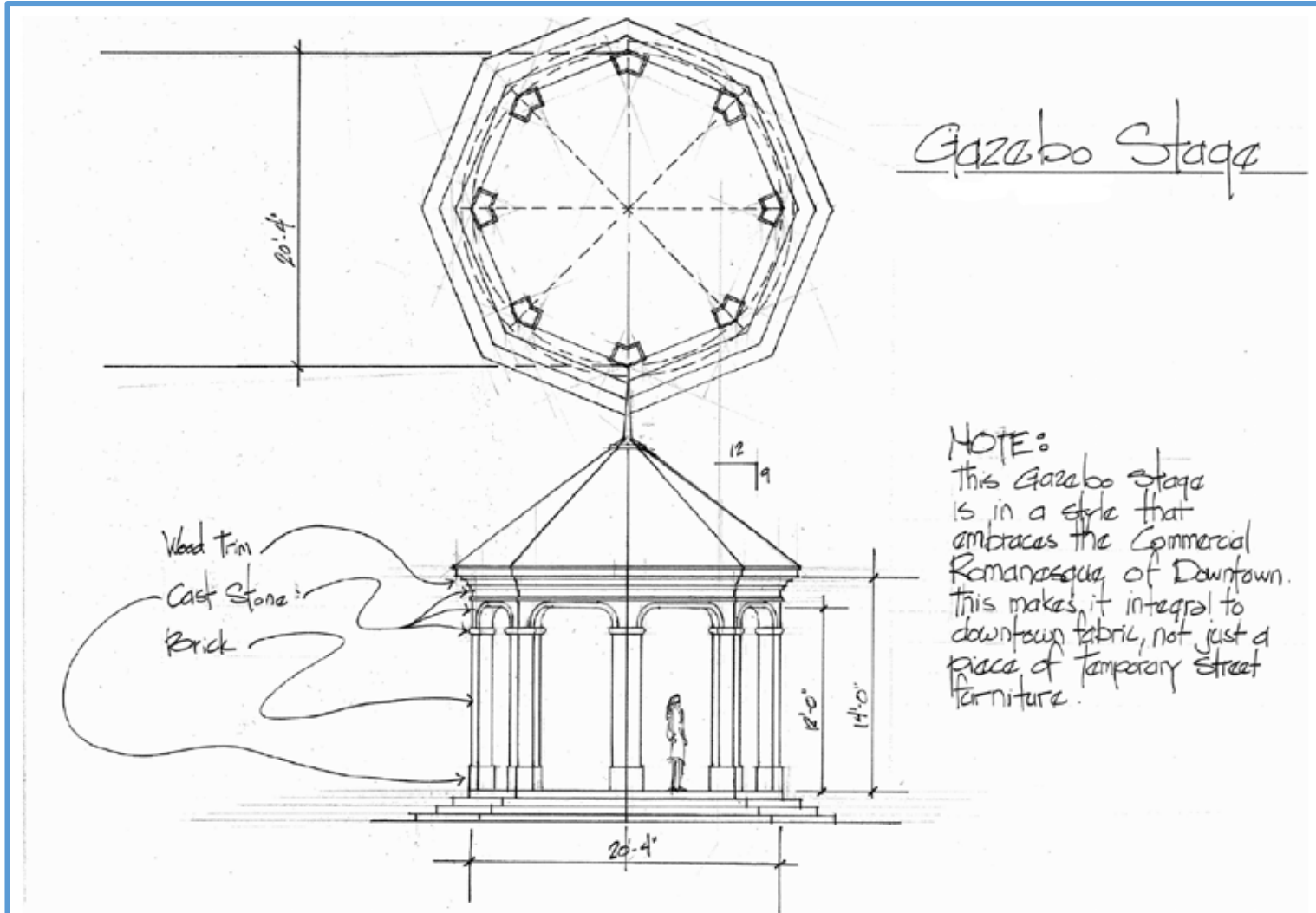
Minnie McDowal Park 2.0





Minnie McDowal Park 2.0

Gazebo / Stage Concept:





Minnie McDowal Park 2.0

Water Wall / Art Wall Concept:



Above: Dallas Museum of Art

Below: Paley Park, New York City



Right: Local Artists Mara Smith and Pamela Nelson



Above/ Right: Jawaher Al Saadiyat, Abu Dhabi, UAE
(by MESA Design Group)





Minnie McDowal Park 2.0

Water Features:



Above: Calm splash pad at Kyle Warren Park



Above: Active splash pad at Kyle Warren Park



Above: Active splash pad at Kyle Warren Park

Below: Trees in decomposed granite at Rice University



Below: Trees in decomposed granite at Rice University



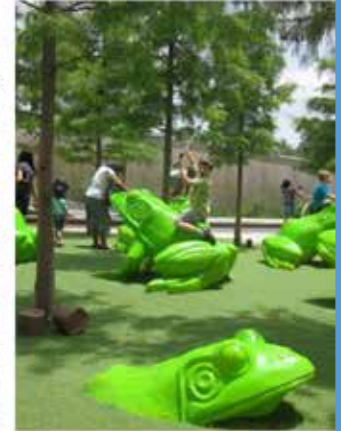
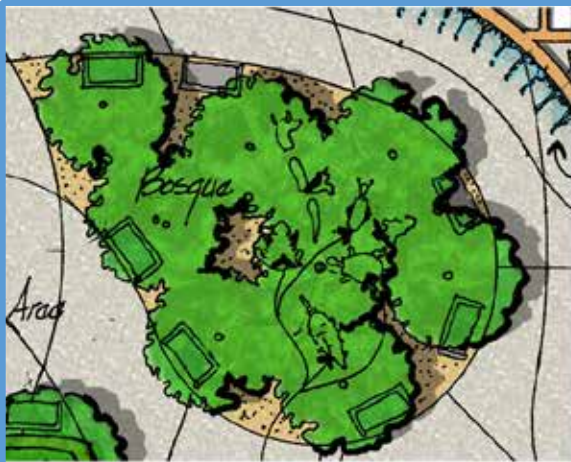
Below: Trees in d.g. at the Eiffel Tower



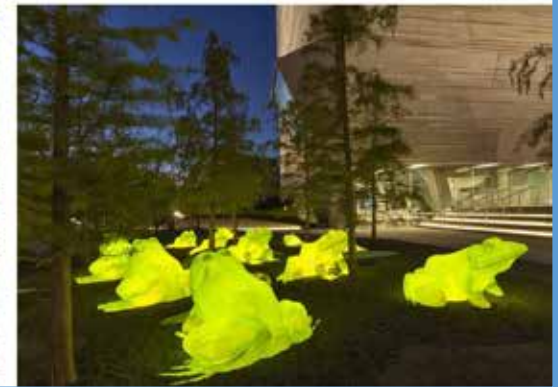


Minnie McDowal Park 2.0

Climbable Sculpture:



Above/ Below: Frogs at Perot Museum of Science, Dallas, TX
David Rogers' "Big Bugs" (Praying Mantis, Ant, Grasshopper) featured at Morris Arboretum, Philadelphia, PA, Franklin Park Conservatory and Botanical Gardens, Columbus, Ohio, and many others





Minnie McDowal Park 2.0

Seating Options:



Above: Bench within raised planter

Below: Movable seating and tables



Above: Raised planter as backless bench
Below: Movable seating and tables and backless benches



Above: Backless benches and bolted down benches with backs

Below: Movable seating and tables





Minnie McDowal Park 2.0

Parking Options & Imagery:



Above: Curbless intersection with bollards

Left Column: Curbless street with parallel parking

Above and Below: Curbless intersection with raised planter for seating on sidewalk side



Below: Back-in angle parking with straight curb