



Potential Site
255 Acres



255 Acres

- Annexed City of Ennis
- Zoning M2 - Heavy Industrial
- Water On Site
- Sewer On Site
- Electricity On Site 69 kVA / 138 kVA
- Gas On Site Atmos
- Rail Access On Site Union Pacific



Transportation (Road & Rail)



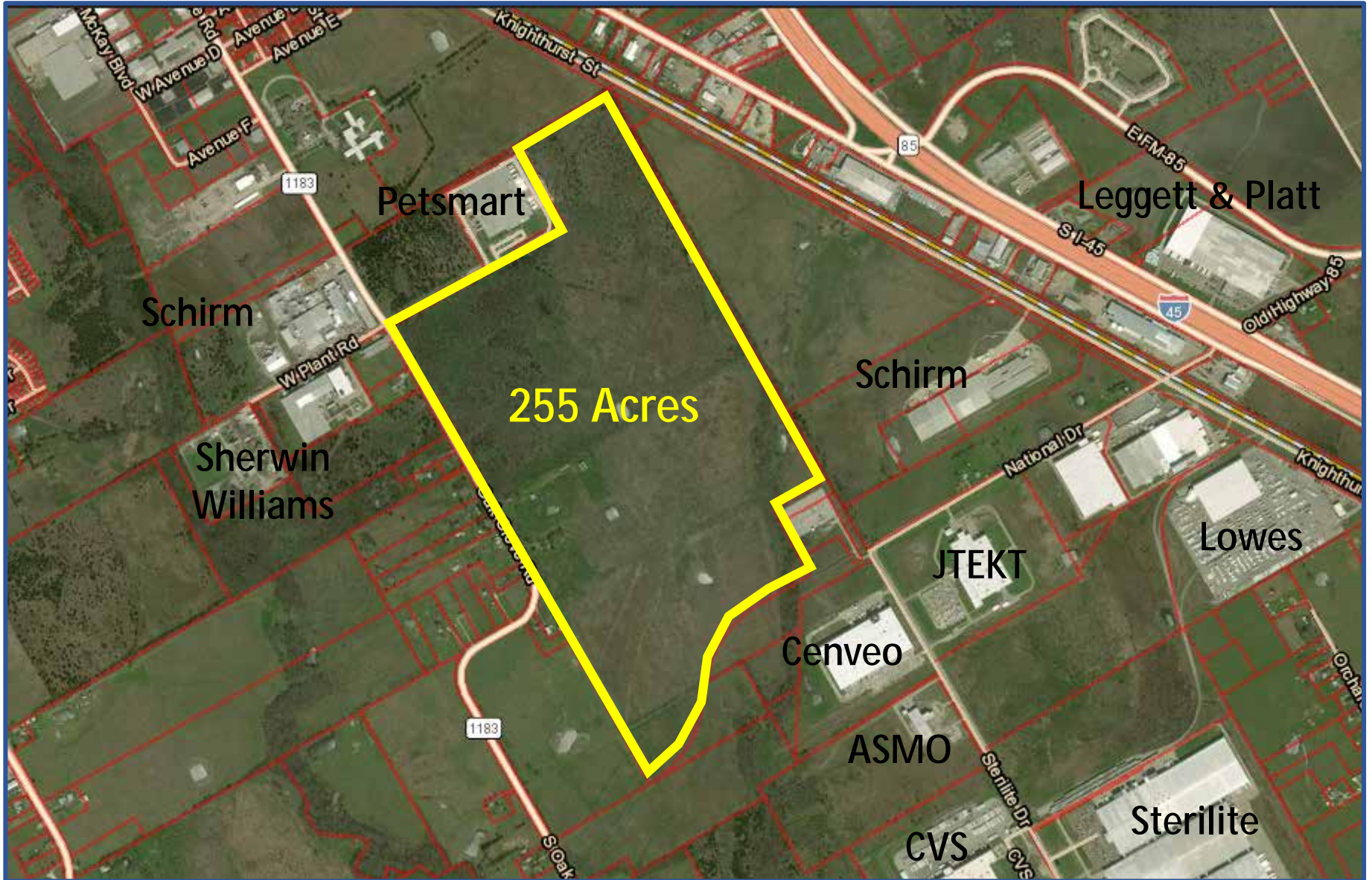


255 Acre Site





Adjacent Industries





Water





Sewer





Electric





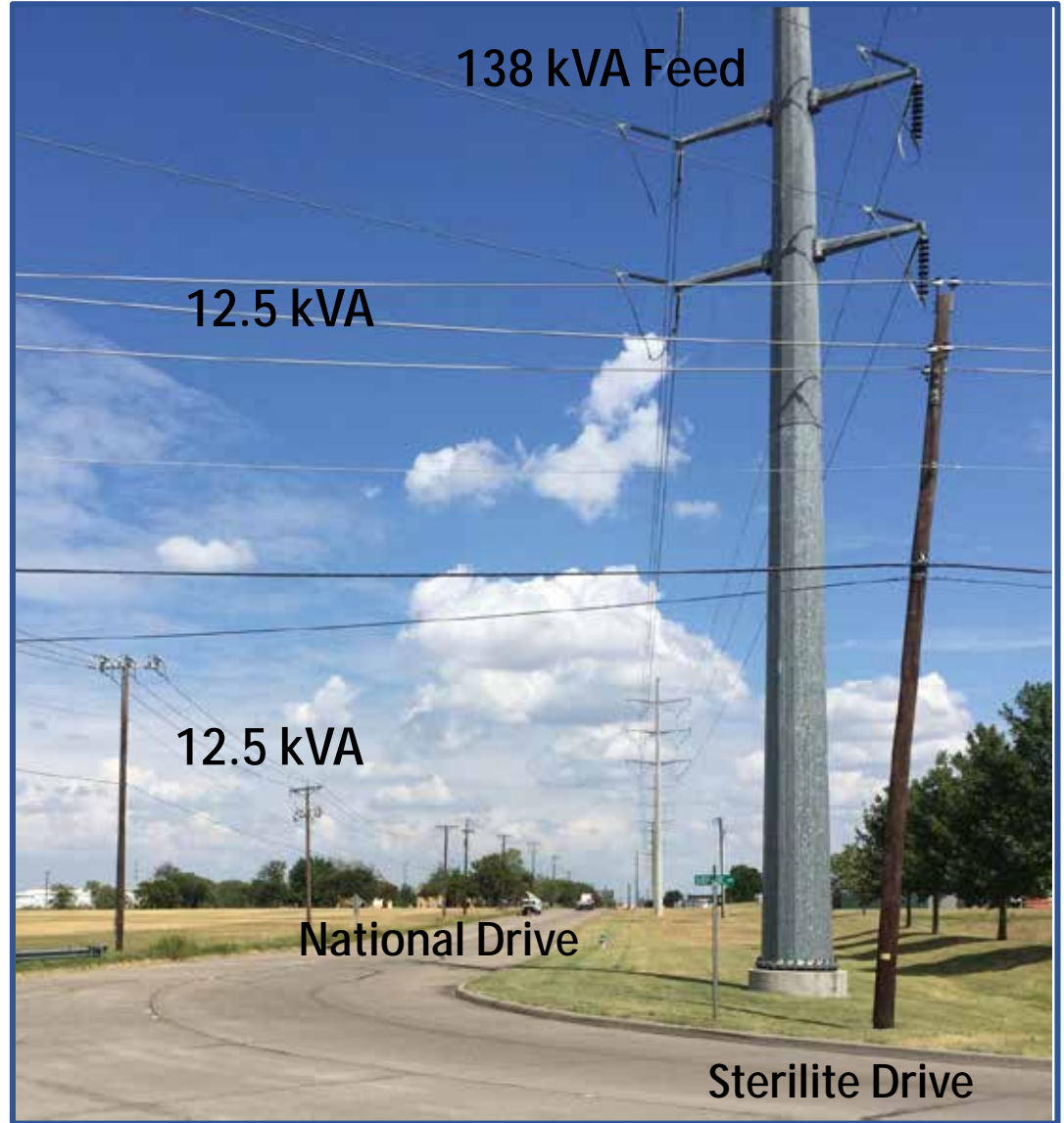
Electric

23 mVA Substation
(138 kVA Feed)



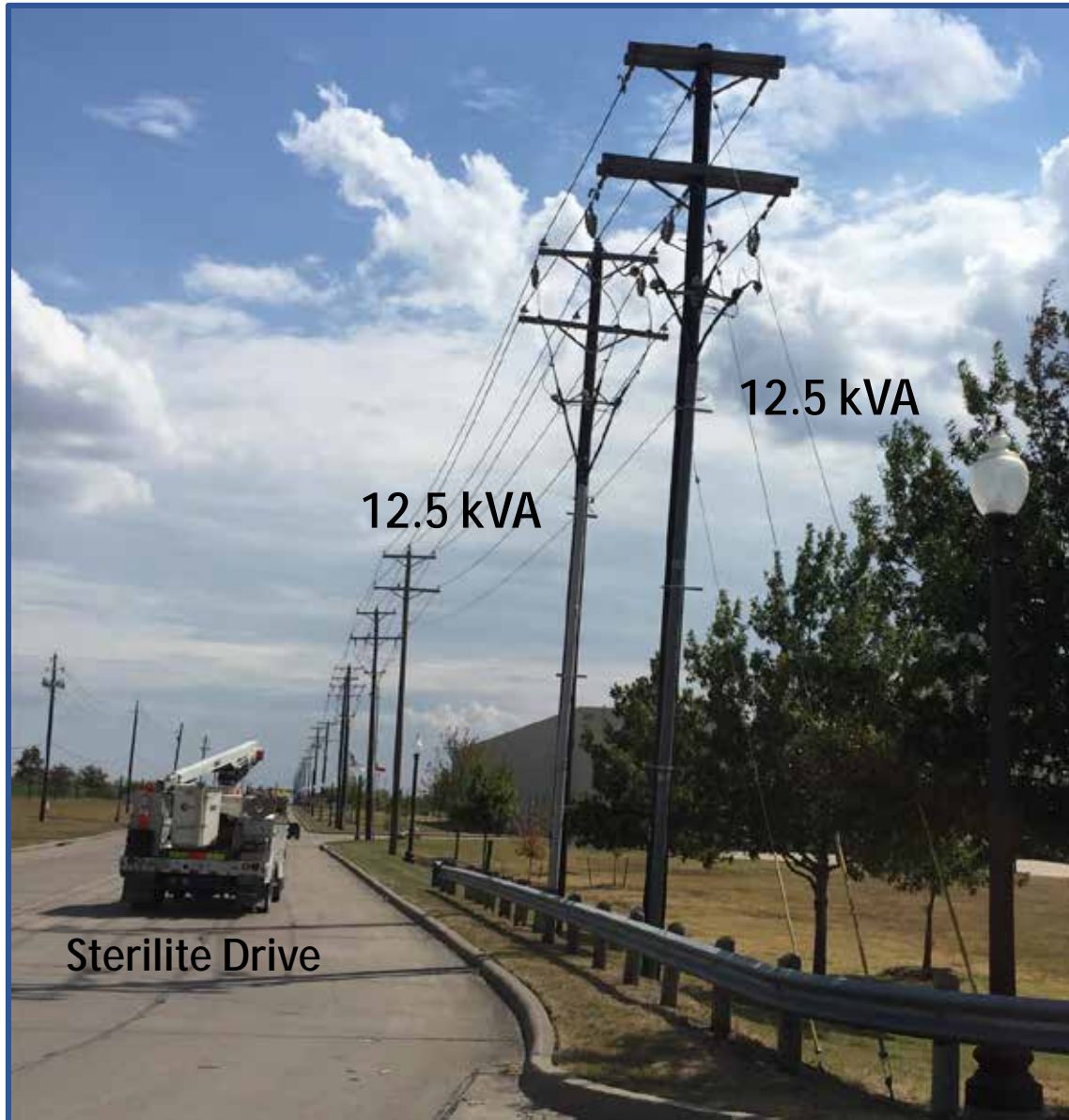


Electric





Electric





Gas





Rail Spur





Flood Plain (unstudied)

