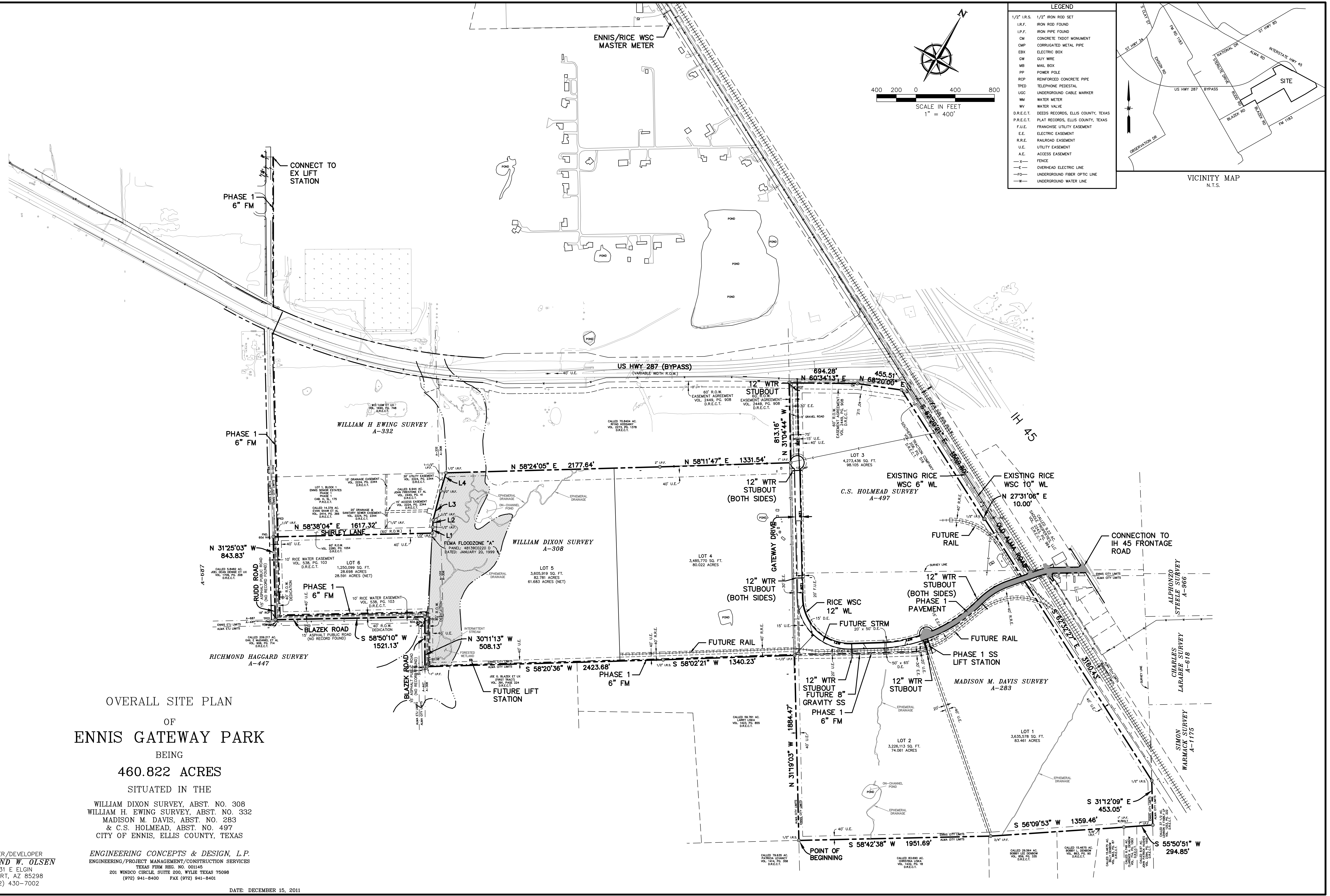
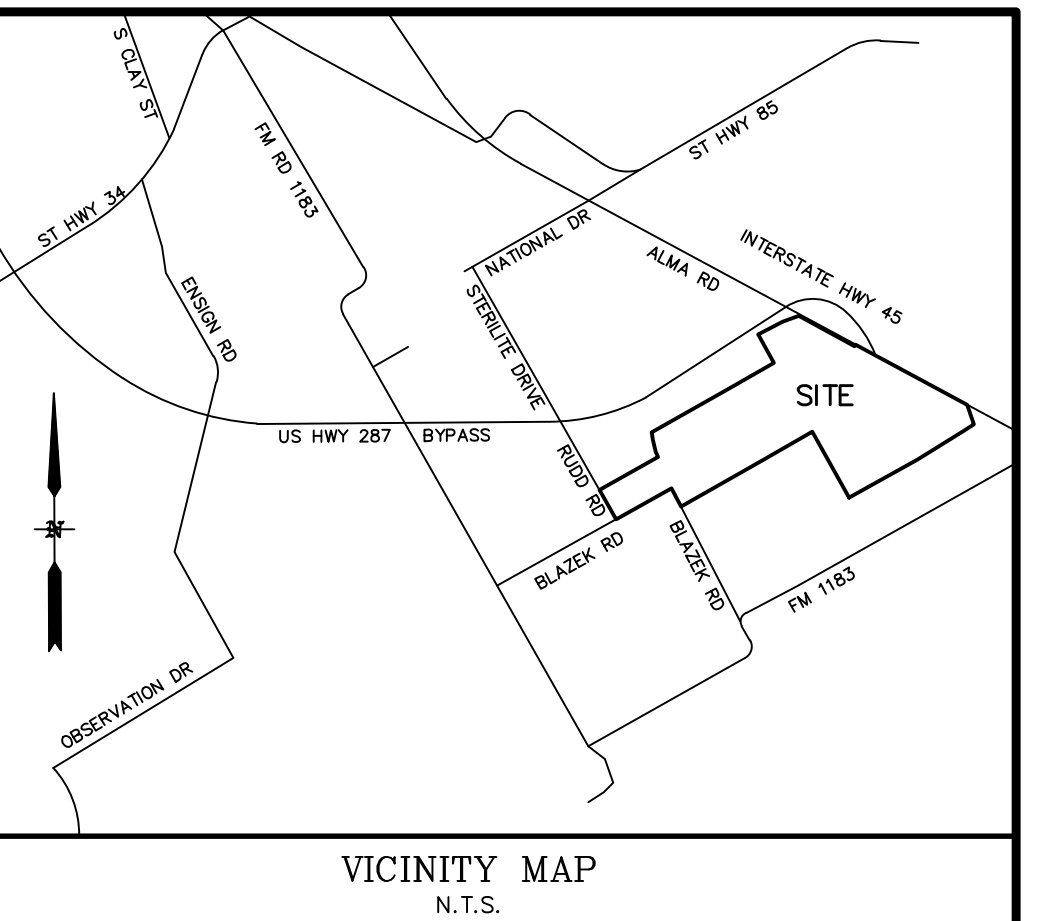
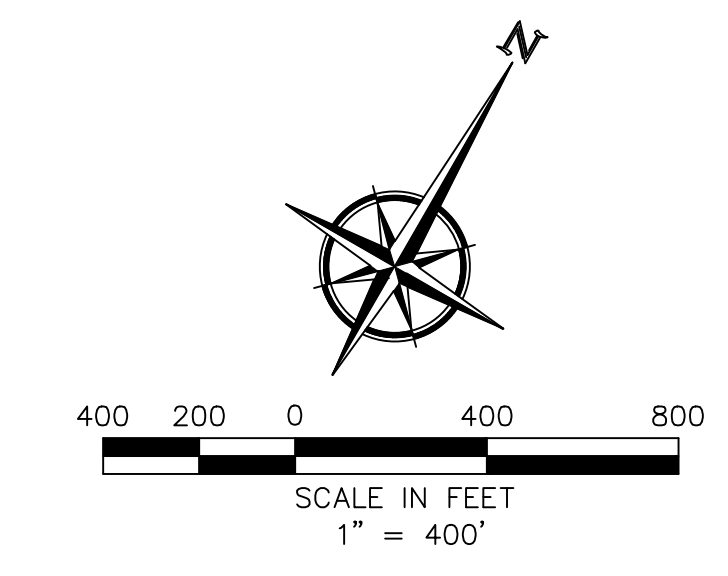


LEGEND	
1/2" I.R.S.	1/2" IRON ROD SET
I.R.F.	IRON ROD FOUND
I.P.F.	IRON PIPE FOUND
CM	CONCRETE TxDOT MONUMENT
CMP	CORRUGATED METAL PIPE
EBX	ELECTRIC BOX
GW	GUY WIRE
MB	MAIL BOX
PP	POWER POLE
RCP	REINFORCED CONCRETE PIPE
TPED	TELEPHONE PEDESTAL
UGC	UNDERGROUND CABLE MARKER
WM	WATER METER
WV	WATER VALVE
D.R.E.C.T.	DEEDS RECORDS, ELLIS COUNTY, TEXAS
P.R.E.C.T.	PLAT RECORDS, ELLIS COUNTY, TEXAS
F.U.E.	FRANCHISE UTILITY EASEMENT
E.E.	ELECTRIC EASEMENT
R.R.E.	RAILROAD EASEMENT
U.E.	UTILITY EASEMENT
A.E.	ACCESS EASEMENT
-X-	FENCE
-E-	OVERHEAD ELECTRIC LINE
-FO-	UNDERGROUND FIBER OPTIC LINE
-W-	UNDERGROUND WATER LINE



OVERALL SITE PLAN  
OF  
**ENNIS GATEWAY PARK**  
BEING  
**460.822 ACRES**  
SITUATED IN THE

WILLIAM DIXON SURVEY, ABST. NO. 308  
WILLIAM H. EWING SURVEY, ABST. NO. 332  
MADISON M. DAVIS, ABST. NO. 283  
& C.S. HOLMEAD, ABST. NO. 497  
CITY OF ENNIS, ELLIS COUNTY, TEXAS

OWNER/DEVELOPER  
**RAYMOND W. OLSEN**  
431 E ELGIN  
GILBERT, AZ 85298  
(602) 430-7002

ENGINEERING CONCEPTS & DESIGN, L.P.  
ENGINEERING/PROJECT MANAGEMENT/CONSTRUCTION SERVICES  
TEXAS FIRM REG. NO. 001145  
201 WINDCO CIRCLE, SUITE 200, WYLIE, TEXAS 75098  
(972) 941-8400 FAX (972) 941-8401

DATE: DECEMBER 15, 2011